

PROPOSED WESTGATE-TARLTON-KROMDRAAI 132 KILOVOLT (kV) POWER LINE AND NEW SUBSTATION

ENVIRONMENTAL IMPACT ASSESSMENT BACKGROUND INFORMATION DOCUMENT (BID)

INTRODUCTION

Eskom Holdings Ltd Central Distribution Division (Eskom) is proposing the construction of a 132 kilovolt (kV) distribution power line and a new substation. The proposed power line will run between the existing Westgate and Tarlton Substations and the proposed new Kromdraai Substation.

The purpose of this Background Information Document (BID) is to provide background information on the development proposal and the full Environmental Impact Assessment (EIA) process to be followed.

Eskom has appointed ARCUS GIBB (Pty) Ltd (ARCUS GIBB) as the independent environmental practitioner to undertake the EIA as well as the public participation process (PPP) for the proposed project. The EIA will conform to the Environmental Impact Assessment Regulations, 2006, promulgated in terms of the National Environmental Management Act, 1998 (Act 107 of 1998).

WHAT IS PPP?

The public participation process is a process in which potential Interested and Affected parties (I&APs) are given an opportunity to comment on, or raise issues relevant to specific matters regarding a project.

LEGAL REQUIREMENTS

The proposed project has been identified in the EIA Regulations 2006 as an activity, which may not commence without environmental authorisation from the competent authority, in this case the Department of Environmental Affairs and Tourism (DEAT).

The specific activity that requires authorisation is identified as follows in terms of Government Notice R.387:

"The construction of facilities or infrastructure, including associated structures or infrastructure for the transmission and distribution of above ground electricity with a capacity of 120 kilovolts or more."

The specific activities that require authorisation are identified as follows in terms of Government Notice R.386:

"The construction of facilities or infrastructure, including associated structures or infrastructure, for any purpose in the one in ten year flood line of a river or stream, or within 32 metres from the bank of a river or stream where the flood line is unknown, excluding purposes associated with existing residential use, but including -

- (i) canals;
- (ii) channels;
- (iii) bridges;
- (iv) dams; and
- (v) weirs.

"The dredging, excavation, infilling, removal or moving of soil, sand or rock exceeding 5 cubic metres from a river, tidal lagoon, tidal river, in-stream dam, floodplain or wetland."

"The construction of a road that is wider than 4 metres or that has a reserve wider than 6 metres, excluding roads that fall within the ambit of another listed activity or which are access roads of less than 30 metres long."

PROJECT DESCRIPTION

The project comprises of the construction of a 132 kV power line, which is proposed to start at the existing Westgate Substation and continue through two proposed alignments to the existing Tarlton Substation. From the Tarlton Substation there are three proposed alignments leading to two alternative locations for the proposed Kromdraai Substation.

A section of the Westgate-Tarlton 132 kV power line is proposed within a double servitude. The remaining sections of the power line will form part of a single servitude (Refer to Figure 1).

The need for the proposed substation and the 132 kV power line is as a result of development within the area, which has resulted in the existing network of 11 kV and 44 kV power lines incapable of supplying the required demand.

SITE DESCRIPTION

The proposed development may intersect or occur along the following land uses: roads, railway lines, farmlands, mines and residential areas. The topography varies from one site to another due to the east-west ridges running through the study area. The site is therefore characterised by an elevation ranging from 1 650 m – 1 759 m above sea level.

The site area is also described as having a number of rivers and wetlands, which contribute to the species richness of the area.

PROPOSED WESTGATE-TARLTON-KROMDRAAI 132 KILOVOLT (kV) POWER LINE AND NEW SUBSTATION

ENVIRONMENTAL IMPACT ASSESSMENT BACKGROUND INFORMATION DOCUMENT (BID)

LOCATION OF PROPOSED PROJECT

The alternative alignments of the proposed distribution power line and the proposed Kromdraai Substation are located in the Tarlton and Magaliesburg area in western Gauteng (Figure 1).

PROJECT ALTERNATIVES

Various alternative route alignments are proposed for the project. These alternatives are indicated on Figure 1.

PHASES OF THE EIA PROCESS

Scoping Phase

This phase will include the following tasks:

- Consultation with Interested and Affected Parties (I&AP)s including key stakeholders;
- Identification of key projects issues and alternatives; and
- Compilation of Scoping Report (SR) and Plan of Study for EIA.

EIA and EMP Phase

This phase will include the following tasks:

- Ongoing consultation with Interested and Affected Parties (I&AP)s including key stakeholders;
- Assessment of impacts and identification of mitigation measures;
- Specialist studies in the following areas:
 - Ecology;
 - Avi-fauna;
 - Geology and Soils;
 - Visual impact;
 - Heritage;
 - GIS;
 - Land Use;
 - Social Impact; and
 - Tourism.
- Compilation of an EIA and Environmental Management Plan (EMP).

PUBLIC PARTICIPATION PROCESS

Input from I&APs forms a crucial component of the EIA process hence the public are encouraged to register as I&APs for this project. I&APs are encouraged to send comments regarding the proposed project in writing so that a paper trail can be maintained throughout the EIA process. Registered I&APs will be kept informed of the progress of this project at salient points within the EIA process.

A public meeting will be held, where the project proposal will be presented and the public will be given the opportunity to ask questions and provide comments. The details of the public meeting will be provided to all registered I&APs once their details are confirmed.

PROPOSED WESTGATE-TARLTON-KROMDRAAI 132 KILOVOLT (kV) POWER LINE AND NEW SUBSTATION

ENVIRONMENTAL IMPACT ASSESSMENT BACKGROUND INFORMATION DOCUMENT (BID)

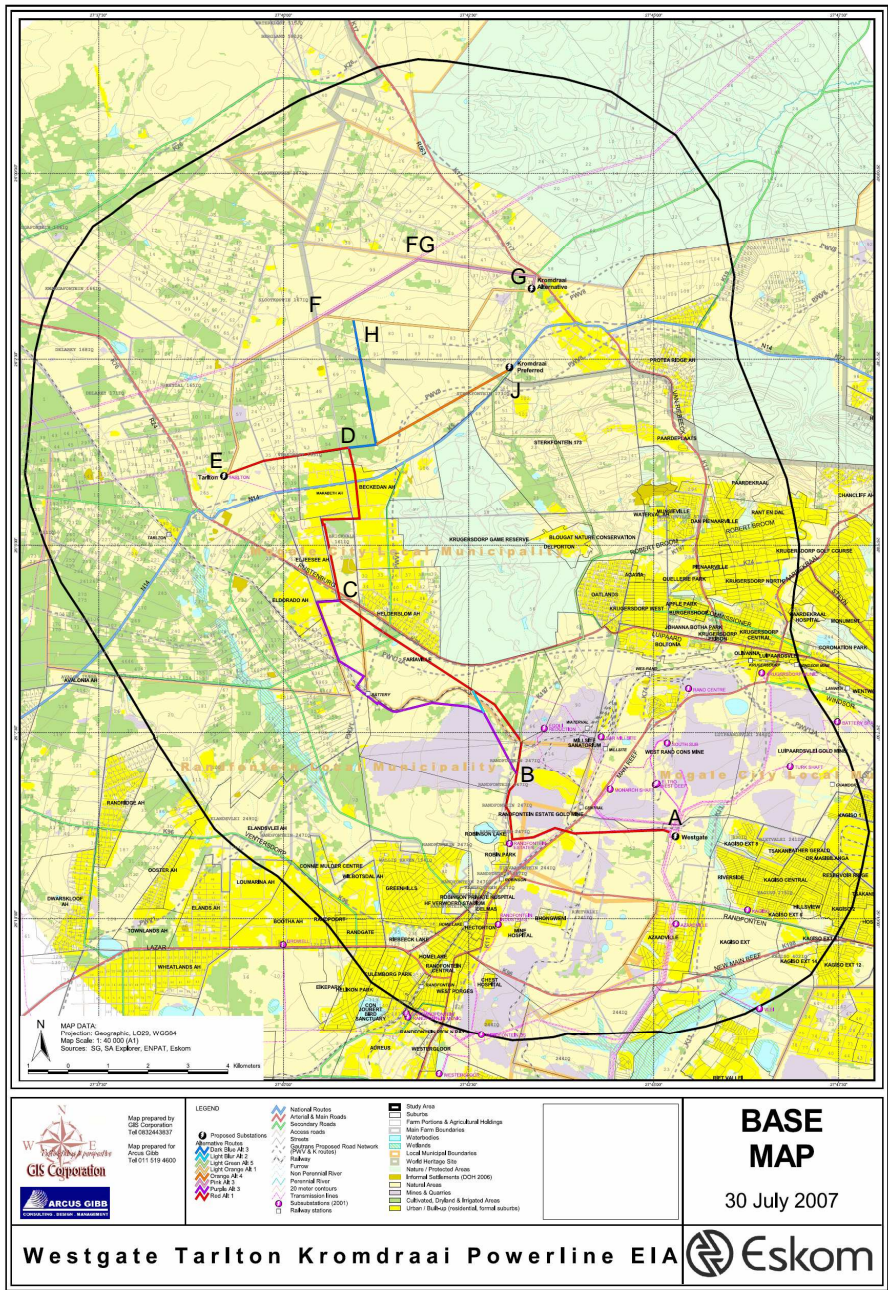


Figure 1. Preferred and alternative proposed routes for the power line and proposed location of the new Kromdraai substation

Key for Preferred and Alternative Routes:
 Preferred Route: A – B – C – D – E: approximately 19.2 km;
 Preferred Route: E – D – J: approximately 6.9 km;
 Alternative Route: A – B – BC – C – D – E: approximately 20.8 km;
 Alternative Route 1: E – F – H – G: approximately 10.6 km; and
 Alternative Route 2: E – F – FG – G: approximately 10.6 km.

PROPOSED WESTGATE-TARLTON-KROMDRAAI 132 KILOVOLT (kV) POWER LINE AND NEW SUBSTATION

**ENVIRONMENTAL IMPACT ASSESSMENT
BACKGROUND INFORMATION DOCUMENT (BID)**

COMMENT AND REGISTRATION SHEET

In order to ensure that you are kept up to date with the project, please ensure that you register as an I&AP with ARCUS GIBB. To register as an I&AP, kindly contact Ms. Raveshni Naidoo of ARCUS GIBB by using the following contact details:

ARCUS GIBB (Pty) Ltd.
P O Box 2700
Rivonia
Johannesburg
2128
Fax: (011) 807 5670
Tel: (011) 519 4600
Email: pfurniss@gibb.co.za

Title	
First Name	
Surname	
Organisation	
Position	
Address	
City	
Postal Code	
Tel	
Fax	
Cell	
Email	

Please indicate any comments or issues, which the EIA should address

Please provide the names and contact details of any other I&APs who should be added to the I&AP database