

# Foskor (Pty) Ltd: Rock Phosphate Storage Facility on Portions 55 & 56 of Erf 5333



**Environmental Review Committee  
Monday 7 May 2012**



# Agenda



- Introduction
- Site Location Map
- Motivation for the Project
- Project Description
- Potential Impacts
- Environmental Legislative Requirements
- Public Participation Process
- Project Progress
- Questions and Discussions

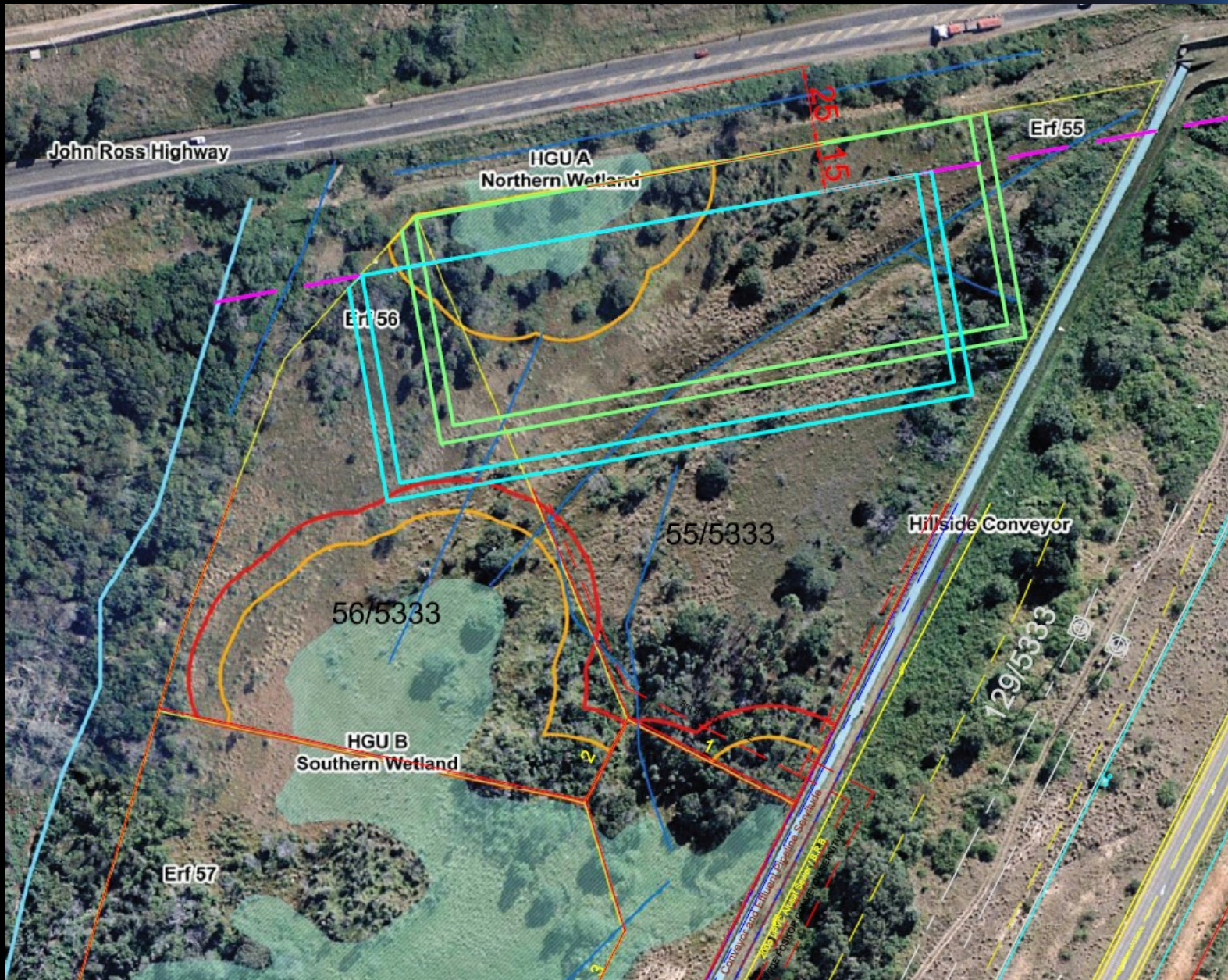
# Introduction



- Project Name: Foskor's Rock Phosphate Storage Facility
- Location: Portions 55 & 56 of Erf 5333,
  - Corner of the John Ross Highway and the West Central Arterial.
- EAP: Arcus GIBB (Pty) Ltd
- Environmental Process: Basic Assessment
- Applicant: Foskor (Pty) Ltd



# Site Location Map



# Motivation for the Project



- To address the storage challenges by increasing rock phosphate storage capacity to 200 000 tons
- To provide a raw material buffer capacity for supply security purposes, in the event that rail delivery is compromised
- To improve capital productivity and drive profitable growth



# Project Description

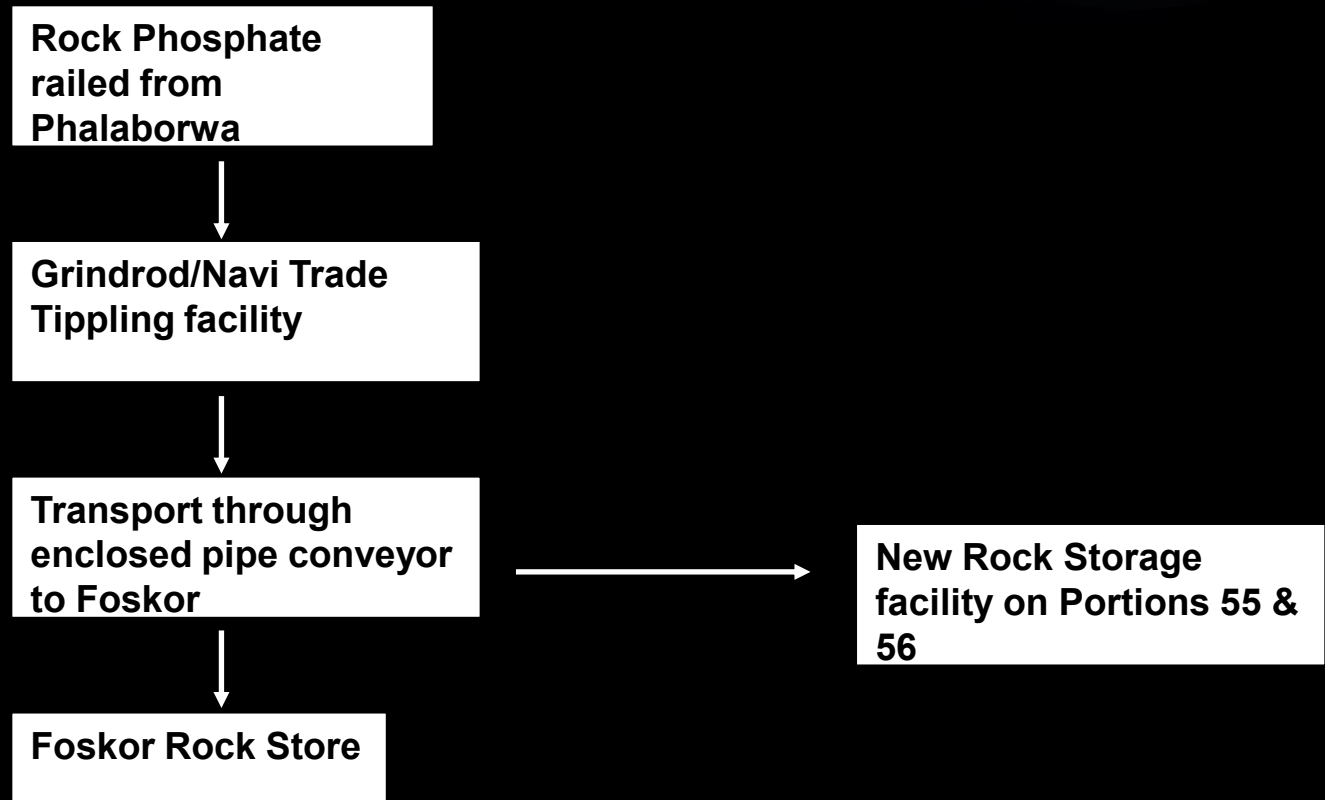


- The phosphate store will accommodate 200 000 tons of rock phosphate in an enclosed bunker type storage facility
- The enclosed bunker facility will be equipped with a few offices and ablution facilities
- The project will also include: road access, storm water infrastructure and enclosed conveyors

# Project Description (Continued)



- Process flow



# Potential Impacts



- Wetland & water quality
- Air quality (dust & vehicle fumes)
- Traffic
- Noise
- Visual and aesthetic
- Job creation, capacity building during construction
- (Heritage?)

Cumulative Impacts



# Environmental Legislative Requirements



- Environmental Authorisation: DEA (parastatal)
- BA Application submitted and accepted:
  - NEAS Reference Number: DEA/EIA/0001117/2012
  - DEA Reference Number: 14/12/16/3/3/1/526
- Atmospheric Emissions License (SRK): GIBB Impact Statement
- NEMAQA: Activity 14, Category 5, Sub-Category 5.1.

<p><b>GN R544 Activity: 2</b></p>	<p>“The construction of facilities or infrastructure for the storage of ore or coal that requires an atmospheric emissions license in terms of the National Environmental Management: Air Quality Act (Act No. 39 of 2004).”</p>
<p><b>GN R544 Activity: 11</b></p>	<p>“The construction of: (x) buildings exceeding 50 square metres in size;  where such construction occurs within a watercourse or within 32 metres of a watercourse, measured from the edge of a watercourse, excluding where such construction will occur behind the development setback line.  (Note: The EIA Regulations defines a wetland as a watercourse)”</p>
<p><b>GN R544 Activity: 18</b></p>	<p>The infilling or depositing of any material of more than 5 cubic metres into, or the dredging, excavation, removal or moving of soil, sand, shells, shell grit, pebbles or rock from  (i) a watercourse;</p>
<p><b>GN R544 Activity: 28</b></p>	<p>“The expansion of existing facilities for any process or activity where such expansion will result in the need for a new, or amendment of, an existing permit or licence in terms of national or provincial legislation governing the release of emissions or pollution, excluding where the facility, process or activity is included in the list of waste management activities published in terms of section 19 of the National Environmental Management: Waste Act, 2008 (Act No. 59 of 2008) in which case that Act will apply.”</p>
<p><b>GN R546 Activity: 4</b></p>	<p>“The construction of a road wider than 4 metres with a reserve less than 13.5 metres.  (a) In Eastern Cape, Free State, KwaZulu-Natal, Limpopo, Mpumalanga and Northern Cape provinces:      iii) In Urban Areas: (aa) Areas zoned for use as public open space; (bb) Areas designated for conservation use in Spatial Development Frameworks adopted by the competent authority or zoned for a conservation purpose; (cc) Seawards of the development setback line or within urban protected areas.”</p>

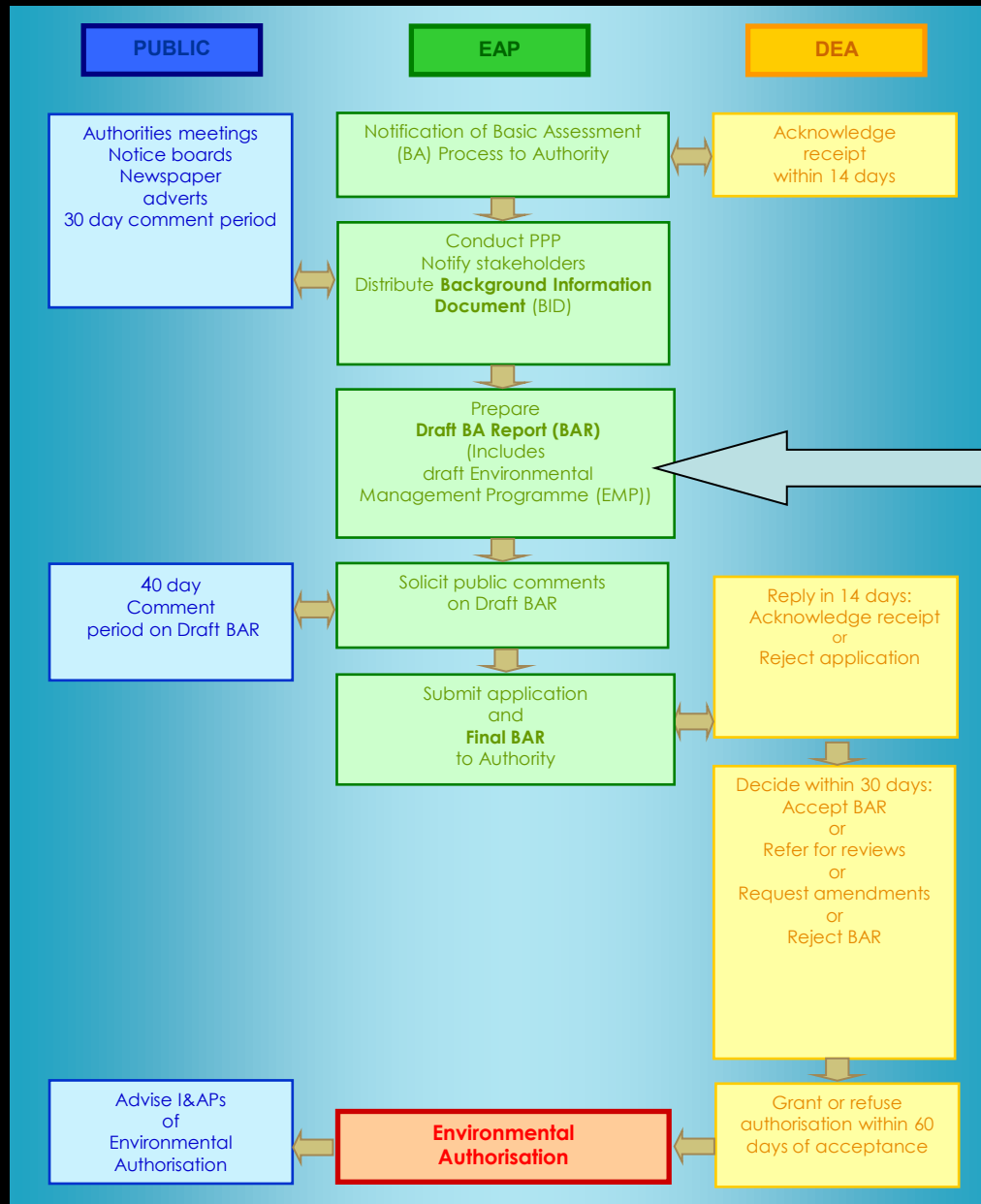
# Public Participation Process



The public have been invited to register as an I&AP and take part in the PPP through:

- Distribution of the BID and comments form
- Media Notice: The Zululand Observer (x2) and the Umlozi Wezindaba
- Site display notice boards
- Stakeholder meeting
- **Public meeting**
- **Distribution of the Draft BAR for public comment.**

# Project Progress



We Are Here !



# Questions and Discussions?

**Please respond to  
Gisela Fechter  
in writing**

[gfechter@gibb.co.za](mailto:gfechter@gibb.co.za)

**Durban Office**  
Westville  
South Africa

54 Norfolk Terrace  
Westville, 3630

Tel: +27 31 267 8567

Fax: +27 31 266 3310

[www.gibb.co.za](http://www.gibb.co.za)