

ENGINEERING UNIT
COASTAL, STORMWATER AND CATCHMENT MANAGEMENT

REDUCED PLAN USE SCALE BELOW

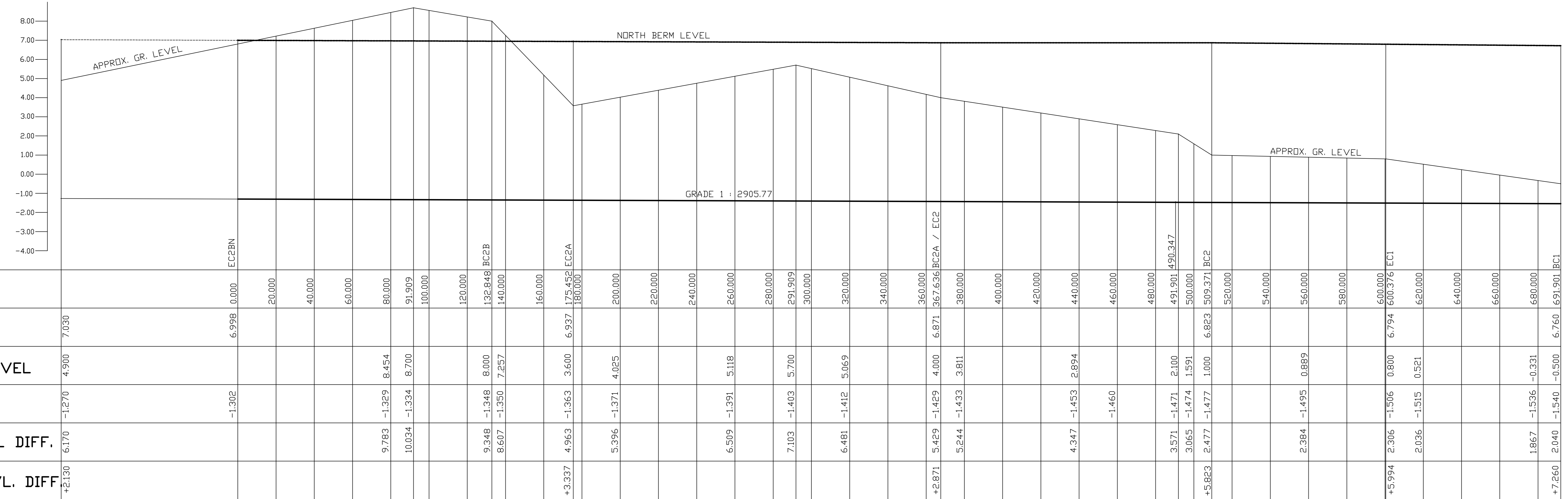
70mm ON ORIGINAL PLAN

LEGEND

EXISTING UNDERGROUND SERVICES ARE AS SHOWN BELOW

- SEWERS AND M.H.'S
- STORM WATER DRAIN AND M.H.'S
- WATER MAINS AND VALVES
- ELECTRICITY CABLES
- G.P.O. TELEPHONE CABLES

CD-ORDINATE LIST			
CENTRE LINE CD-ORDINATES			
REFERENCE	X CD-ORDINATE	Y CD-ORDINATE	RADIUS
CH. 0.00	3299259.903	-874.478	CH.00-BC2B = 605.000
BC2B	3299267.729	-1006.822	
EC2A	3299265.588	-1048.871	EC2A-EC2 = 453.500
BC2A/EC2	3299215.843	-1233.514	BC2A-BC2 = 1500.000
BC2	3299145.085	-1356.085	
EC1	3299099.207	-1427.928	EC1-BC1 = 509.766
BC1	3299054.718	-1514.445	
OFF-SET CD-ORDINATES (BOTTOM EDGE OF CANAL)			
START	3299188.413	-886.663	START-A = 532.500
A	3299195.298	-1003.106	
B	3299193.159	-1045.160	B-C = 381.000
C	3299151.384	-1200.287	C-D = 1427.500
D	3299084.109	-1316.997	D-E-F = 572.350
E	3299041.220	-1390.554	
F	3298996.603	-1491.281	



DATUM -5.00 M.S.L.

CHAINAGE	NORTH BERM LEVEL	APPROX. EX. GROUND LEVEL	CANAL INVERT LEVEL	APPROX. GR. LVL.-CANAL DIFF.	NORTH BERM-EX. GR. LVL. DIFF
0.000	7.030	4.900	-1.302	6.170	+2.130
20.000	7.030	4.900	-1.302	6.170	+2.130
40.000	7.030	4.900	-1.302	6.170	+2.130
60.000	7.030	4.900	-1.302	6.170	+2.130
80.000	7.030	4.900	-1.302	6.170	+2.130
100.000	7.030	4.900	-1.302	6.170	+2.130
120.000	7.030	4.900	-1.302	6.170	+2.130
132.848	7.030	4.900	-1.302	6.170	+2.130
140.000	7.030	4.900	-1.302	6.170	+2.130
160.000	7.030	4.900	-1.302	6.170	+2.130
175.452	7.030	4.900	-1.302	6.170	+2.130
180.000	7.030	4.900	-1.302	6.170	+2.130
200.000	7.030	4.900	-1.302	6.170	+2.130
220.000	7.030	4.900	-1.302	6.170	+2.130
240.000	7.030	4.900	-1.302	6.170	+2.130
260.000	7.030	4.900	-1.302	6.170	+2.130
280.000	7.030	4.900	-1.302	6.170	+2.130
291.909	7.030	4.900	-1.302	6.170	+2.130
300.000	7.030	4.900	-1.302	6.170	+2.130
320.000	7.030	4.900	-1.302	6.170	+2.130
340.000	7.030	4.900	-1.302	6.170	+2.130
360.000	7.030	4.900	-1.302	6.170	+2.130
367.636	7.030	4.900	-1.302	6.170	+2.130
380.000	7.030	4.900	-1.302	6.170	+2.130
400.000	7.030	4.900	-1.302	6.170	+2.130
420.000	7.030	4.900	-1.302	6.170	+2.130
440.000	7.030	4.900	-1.302	6.170	+2.130
460.000	7.030	4.900	-1.302	6.170	+2.130
480.000	7.030	4.900	-1.302	6.170	+2.130
491.901	7.030	4.900	-1.302	6.170	+2.130
500.000	7.030	4.900	-1.302	6.170	+2.130
520.000	7.030	4.900	-1.302	6.170	+2.130
540.000	7.030	4.900	-1.302	6.170	+2.130
560.000	7.030	4.900	-1.302	6.170	+2.130
580.000	7.030	4.900	-1.302	6.170	+2.130
600.000	7.030	4.900	-1.302	6.170	+2.130
620.000	7.030	4.900	-1.302	6.170	+2.130
640.000	7.030	4.900	-1.302	6.170	+2.130
660.000	7.030	4.900	-1.302	6.170	+2.130
680.000	7.030	4.900	-1.302	6.170	+2.130
700.000	7.030	4.900	-1.302	6.170	+2.130

SCALE HOR. 1:1000
VERT. 1:100

Revision: _____ Date: _____ Description: _____

NOTE: No construction work to commence until land and service negotiations have been completed.

Acquisitions completed: -

Date: _____ Engineer: _____

UNDERGROUND SERVICES CHECKED

SERVICE	DATE	SIGNATURE
S.W. DRAINS	0000	
SEWERS	0000	
WATER MAINS	0000	
G.P.O. CABLES	0000	
ELECTRIC CABLES	0000	
S.A.R. CABLES		
TELEPHONE CABLES		
OIL PIPE LINE		

NOTE: Only underground services affected by new construction work are shown.
Care must be taken during excavations for road foundations, structures etc. to avoid damage to underground services such as sewers, drains, cables, water mains and connections. Wherever possible these must be located before work proceeds.

Contract No. **ID - 1901**

Project Title **UMGENI RIVER CANALISATION PHASE 2.1**

Drawing Title **PLAN AND LONGITUDINAL SECTION**

SCALES AS SHOWN Date Feb. 2006

Designed H.C.W. Checked

Drawn V.G. Surveyed R.A. Logan & Associates

Manager (Coastal Engineering)

Deputy Head

A. PETERS HEAD : ENGINEERING

Drawing No. **46151** Sheet **1** of **4** Rev.

AS BUILT

NAME: _____
SIGNED: _____
DATE: _____