



SRK Consulting

Engineers and Scientists

Suite 20 Hampden Court
7 Hampden Road
4001 Morningside
PO Box 1731
Durban
4000 South Africa
e-Mail: durban@srk.co.za
URL: <http://www.srk.co.za>
Tel.: +27 (0) 31 312 1355
Fax: +27 (0) 31 303 3387
Tel: PMB (33) 345 6311

I:\349677\Correspondence\Umgeni canal assessment_SIMM_050712.doc
SIMM/coxi/0507052

12 July 2005

eThekweni Municipality
166 Old Fort Road
Durban
4001

Attention: Mr H Wenlock

Dear Mr Wenlock,

Umgeni Canal Assessment

SRK Consulting Engineers (SRK) have previously determined floodlines along the Umgeni River but were requested by eThekweni Municipality to look at various scenarios and the impact these would have on the upstream flood levels.

The detailed assessment for the 1:50 and 1:100 year floodlines was carried out by SRK/ DEC as a joint venture during 2000. This investigation included a detailed assessment of the hydrology, survey and scour components of the floodline determination.

The investigations into the flood hydrology are complex and have been reported on in detail in the Umgeni River Flood Study.


The following scenarios were looked at using the 1:100 year storm event: -


1. Current conditions as per Umgeni Study (2000).
2. Proposed canal in place (Chainage 3597- chainage 2560)
3. Proposed canal in place narrowing 20m at the Cemetery (Chainage 3597 – chainage 2560).
4. Proposed canal in place downstream of cemetery (Chainage 3398 – chainage 2560).

The results indicate that the upstream floodlines decrease by approximately 0.5m – 1.0m depending on which scenario in place. We have attached the results for the above scenarios and have included a long section comparing the 1:100 year flood levels for the different scenarios and a locality plan.

Should you require further information, please do not hesitate to contact us.

Yours faithfully


Murray Sim
SRK Consulting


James Morris
SRK Consulting



Partners MJ Braune, JM Brown, AC Burger-Finkler, JS Cameron-Catke, JAC Cowan, M Harley, T Hart, PR Laburn, RRM McNell, HAG Memmes, BJ Middleton, MJ Morris, SG Muller, GP Murray, PN Resawane, PE Schmidt, PJ Shephard, AA Smithen, OKH Steffen, PR Stuart, AH Swart, PJ Terbrugge, KM Uderstaat, D van Blaaderen, DJ Venier, HG Waldeck, A Wood

Directors AJ Barrett, PR Laburn, H Luchpoole, BJ Middleton, E Moleki, PE Schmidt, PJ Terbrugge

Associates JCI Boshoff, FM Cassford, CD Darglasi, NM Holdcroft, SA McDonald, LGA Madlala, GP Nel, JP Oenderaal, VS Raedy, D Visser, AC White

Consultants JH de Beer, P/Sr, N/A, MSc, GA, Jones, P/Eng, PhD, WD, Orlepp, P/Eng, M/Eng, K Owen, MSc, Eng, D/C, RP, Pars, v/ P/Eng, MSc, TR, Stacey, P/Eng, D/Sc, DWI, Warwick, P/Sr, MSc, M/Sc, (Hons)

Corporate Shareholder: Kagiso Enterprises (Pty) Ltd

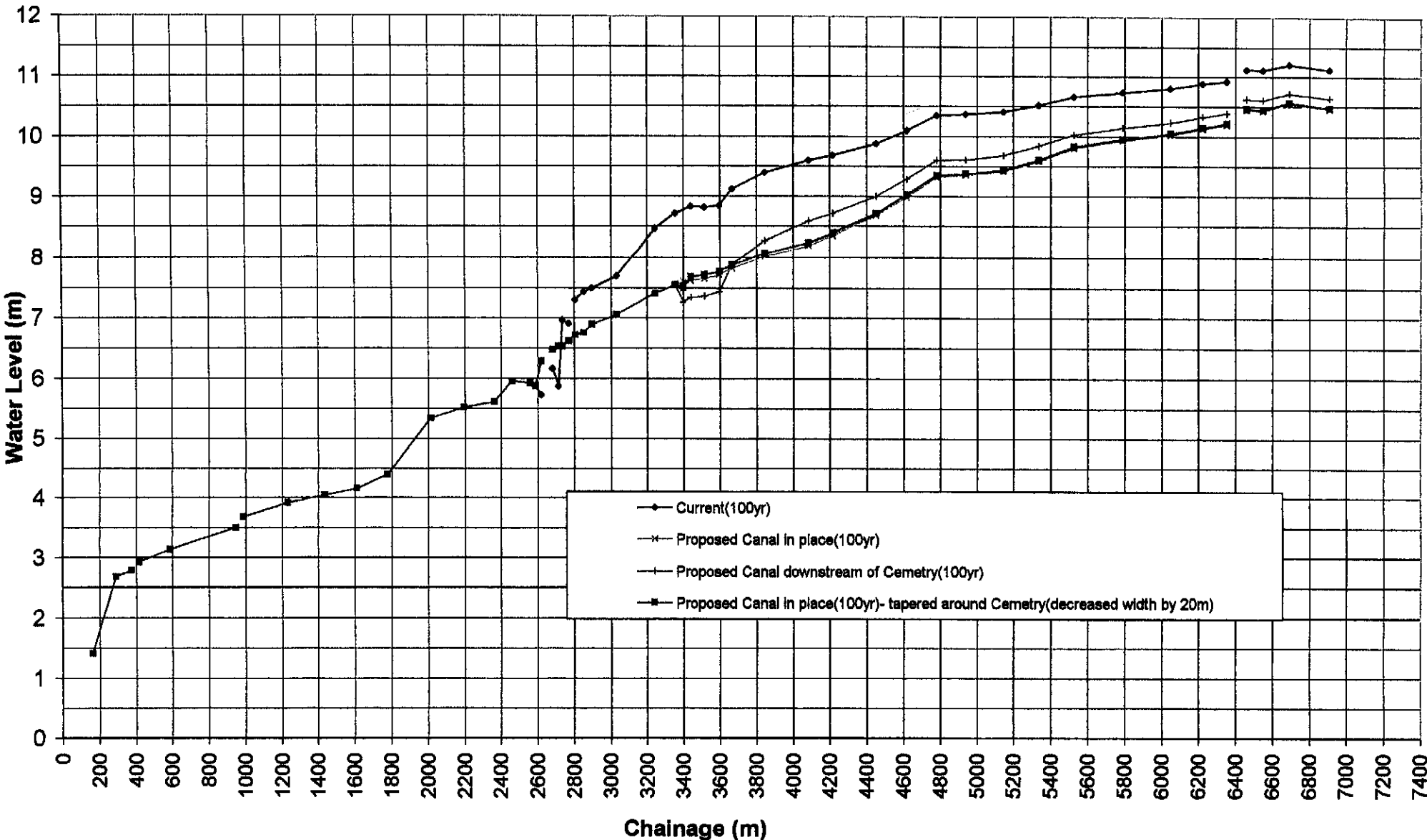
KAGISO

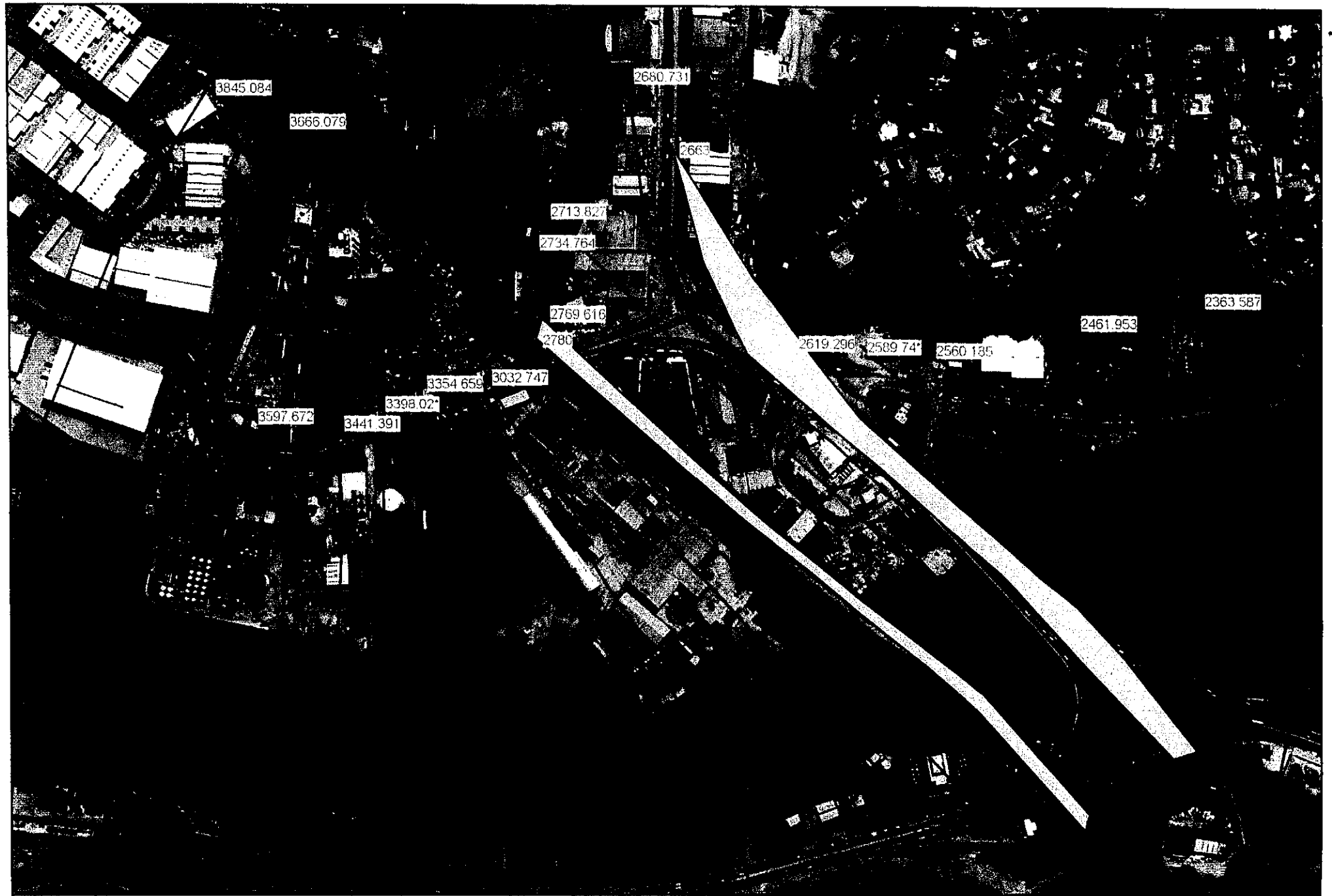
Steffen, Robertson and Kirsten (South Africa) (Pty) Ltd

Reg No 1995/012890/07

| | |
|------------------|---------------------|
| Cape Town | +27 (0) 21 409 2400 |
| Durban | +27 (0) 31 312 1355 |
| East London | +27 (0) 43 748 6292 |
| Harare | +263 (0) 4 486 182 |
| Johannesburg | +27 (0) 11 441 1111 |
| Pietermaritzburg | +27 (0) 33 345 6311 |
| Port Elizabeth | +27 (0) 41 581 1911 |
| Pretoria | +27 (0) 12 361 9821 |
| Rustenburg | +27 (0) 14 564 1280 |

Umgeni River 1:100yr flood levels for various scenarios





3845 084

3666 079

2660 731

2663

2713 827

2734 764

2769 616

2780

2619 296

2589 74

2560 185

2461 953

2363 587

3354 659

3032 747

3597 672

3398 02

3441 391