

# NOTICE OF A BASIC ASSESSMENT FOR THE PROPOSED ST HELENA WATERCOURSE CROSSING

(DEA REF NO: 14/12/16/3/3/1/652)



Notice is hereby given that Electrawinds Seeland (Pty) Ltd has submitted an application for environmental authorisation with the National Department of Environmental Affairs (DEA) in terms of the National Environmental Management Act, 1998 (Act 107 of 1998) and Environmental Impact Assessment (EIA) Regulations, June 2010 - GNR 544 for the proposed St Helena Watercourse Crossing. Arcus GIBB (Pty) Ltd. has been appointed as the independent Environmental Assessment Practitioner to conduct the Basic Assessment process, as well as to conduct the associated Public Consultation (Participation) process

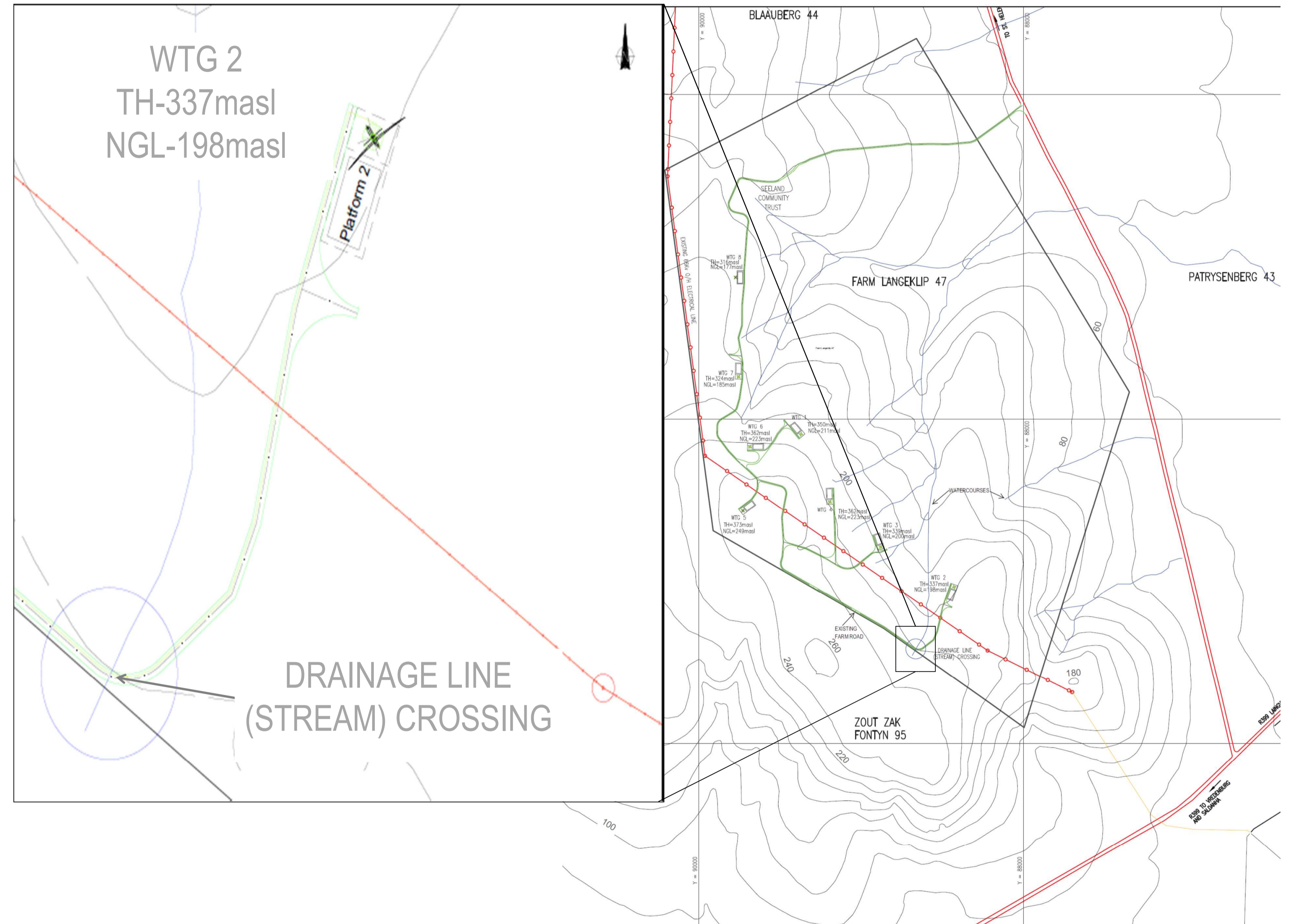
The proposal involves the optimisation of an existing access road across a non-perennial drainage line, located on Langeklip Farm (Erf 47), approximately 5 km east of St Helena Bay and 3 km west of Laingville.

## THE FOLLOWING LISTED ACTIVITY IN TERMS OF THE EIA REGULATIONS APPLY: GN 544 (11)

The construction of:

- (i) canals;
- (ii) channels;
- (iii) bridges;
- (iv) dams;
- (v) weirs;
- (vi) bulk storm water outlet structures;
- (vii) marinas;
- (viii) jetties exceeding 50 square metres in size;
- (ix) slipways exceeding 50 square metres in size;
- (x) buildings exceeding 50 square metres in size; or
- (xi) infrastructure or structures covering 50 square metres or more

where such construction occurs within a watercourse or within 32 metres of a watercourse, measured from the edge of a watercourse, excluding where such construction will occur behind the development setback line.



Location of watercourse crossing

**OPPORTUNITY TO REGISTER AS I&AP AND TO COMMENT ON THE BASIC ASSESSMENT:** The public is afforded a 40 (forty) day period from **Thursday, 20 September 2012 to Wednesday, 31 October 2012** (inclusive) to register and/or comment as Interested and Affected Parties (I&APs) for the above mentioned project.

### **Your involvement:**

For more information regarding this project, or to register, please submit your name, contact information (address, telephone number, e-mail address, postal address) and written comments to Public Participation Office.

### **Contact details:**

The Public Participation Office  
The Administrator  
PO Box 3965, Cape Town, 8000  
Tel: +27 21 469 9180  
Fax: +27 21 424 5571

Email: [sthelenawatercoursecrossing@gibb.co.za](mailto:sthelenawatercoursecrossing@gibb.co.za)