

Location

The Port of Saldanha is a deep-sea port located within Saldanha Bay in the Western Cape. This is on South Africa's western shoreline about 110 km northwest of Cape Town.

The existing Iron Ore Terminal and associated facilities form the main operations of the Port.

The proposed expansions lie for the most part within the boundaries of the Port. However, the proposed new berth, stockyard expansion and new 4th tippler and associated infrastructure extend beyond the current footprint of the terminal.

Local Municipality

The Port lies within the Saldanha Bay Municipal Area. This municipality has a population of close to 99 000 people. Towns within the municipal area include Vredenburg, Saldanha, Hopefield, St Helena Bay, Paternoster and Langebaan.

A variety of industries are operational within the municipal area. Many are linked to the port in one way or another. The ArcelorMittal steel works depends on the Iron Ore Corridor for its supply of iron ore via the Iron Ore Terminal.

Saldanha Bay

The Saldanha Bay, originally a natural bay, has been modified to accommodate the port. A breakwater was constructed to protect port activities. A jetty and associated berths divide the bay into what is known as Small Bay and Big Bay.

Langebaan Lagoon

The Saldanha Bay entrance channel leads to the Langebaan Lagoon, a large embayment of the Atlantic Ocean, and part of the West Coast National Park. The lagoon and nearby inshore islands received RAMSAR designation on 25 April 1988, which confirms it as a wetlands of international importance.

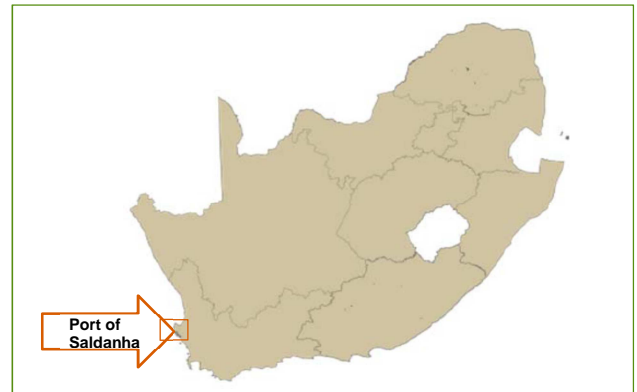


Figure 3: Map of South Africa showing the location of the Port of Saldanha

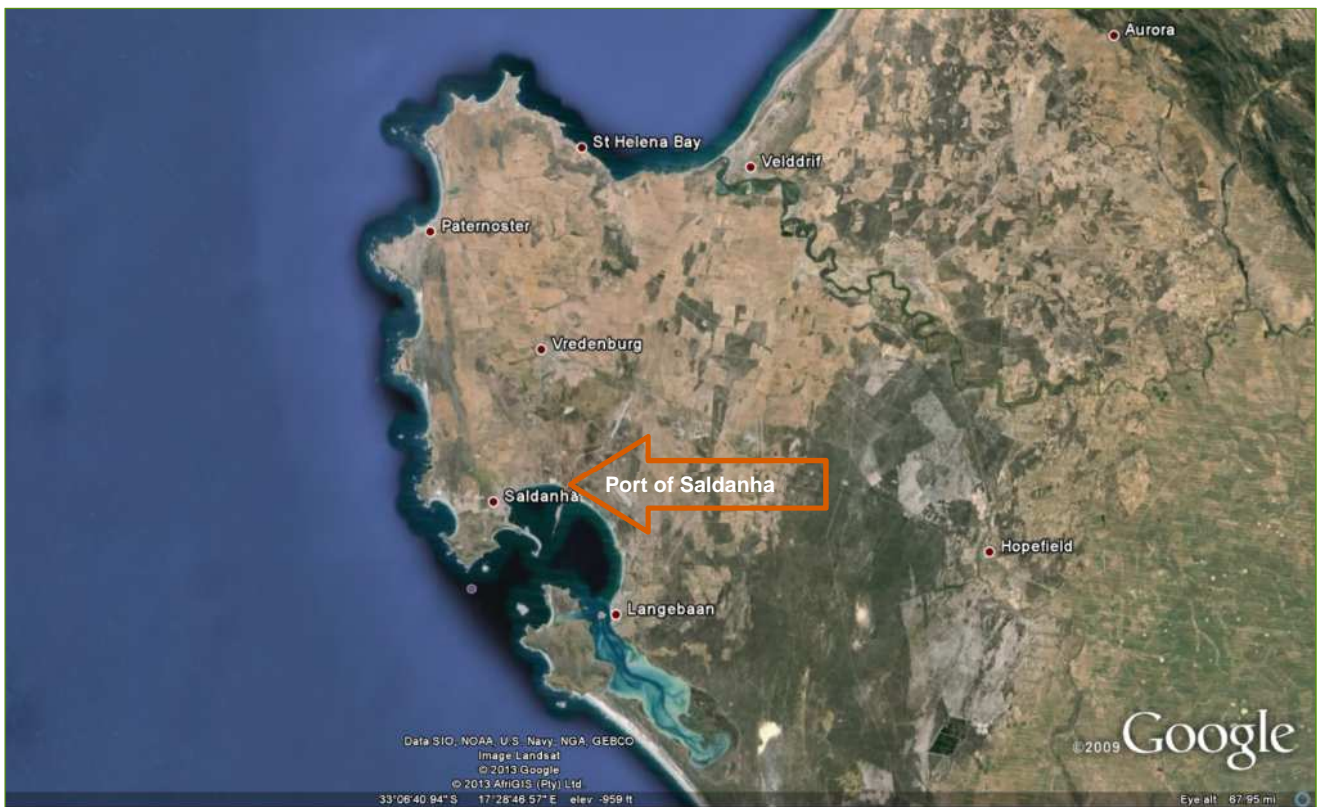


Figure 4: Location of the Port of Saldanha

