

PRELIMINARY LIST OF ENVIRONMENTAL ISSUES

A number of potential environmental issues have already been identified and are listed here to assist I&APs to better understand the investigations to be undertaken as part of the environmental assessment process.

Potential environmental issues are:

- Air pollution.
- Aesthetic or visual impacts arising from the nuclear power station during construction and operation.
- Benefits of development to the local and regional economy.
- Impacts on fauna, flora and avi-fauna.
- Potential safety impacts.
- Potential traffic impacts during construction of the power station.
- Potential nuisance impacts during construction, e.g. dust.
- Pollution and waste management.
- Social and socio-economic impacts during construction related to influx of construction workers during the construction and operational periods.
- The contribution (or not) of electricity supply to sustainable development.

Who are I&AP's?

Any person or group of people concerned with, or affected by an activity and its consequences. This includes the authorities, local communities, investors, workers, customers and consumers, environmental interest groups and the general public.

I&AP REGISTRATION

In terms of the EIA regulations, this proposed project requires assessment and communication of potential environmental impacts of activities based on the procedures, as described in Sections 27 to 36 of the Regulations R385 of April 2006. I&APs are requested to register to ensure that they are sent all relevant correspondence and are notified of important dates for meetings and when project documents will be available for comment.

VOORLOPIGE LYS OMGEWINGSKWESSIES

'n Aantal potensiele omgewingskwessies is reeds identifiseer en word hier gelys ten einde B&GPs by te staan om 'n beter begrip van die ondersoek wat as deel van die omgewingstudieproses onderneem word, te verkry.

Potensiele omgewingskwessies is soos volg:

- Lugbesoedeling.
- Estetiese of visuele impakte voortspruitend uit die konstruksie en bedryf van die kernkragentrale.
- Voordele van die ontwikkeling vir die plaaslike- en streeks-ekonomie.
- Impakte op fauna, flora en avi-fauna (voëllewe).
- Potensiele veiligheidsimpakte.
- Potensiele verkeersimpakte gedurende konstruksie van die kragentrale.
- Potensiele steurnisimpakte gedurende konstruksie, bv. stof.
- Besoedeling en die bestuur van afval.
- Sosiale en sosio-ekonomiese impakte gedurende konstruksie wat met die invloed van konstruksie werkers gedurende die konstruksiefase sowel as die bedryfsfase, verband hou.
- Die bydra, al dan nie, van elektrisiteit vir volhoubare ontwikkeling.

Wie is 'n B&GP?

Enige persoon of groep wat besorg is oor, of geraak word deur 'n aktiwiteit en dié se gevolge. Dit sluit owerhede, plaaslike gemeenskappe, werkers, beleggers, kliënte en verbruikers, omgewingsbelangegroep en die algemene publiek, in.

B&GP REGISTRASIE

In terme van die OIS regulasies verg die projek die bestudering en kommunikasie van potensiele omgewingsimpakte van aktiwiteite gebaseer op die prosedure wat in Afdeling 27 tot 36 van Regulasie R385 van April 2006, uiteen gesit is. B&GPs word versoek om te registreer om te verseker dat hulle alle relevante korrespondensie ontvang en van belangrike datums van vergaderings in kennis gestel word asook van wanneer projek dokumentasie vir kommentaar beskikbaar sal wees.

ULUHLU OLUSISEKO LWEMIBA YOKUSINGQONGILEYO

Kukho imiba eliqela yokusingqongileyo enokuthi ibe kho sele ichongiwe yaye idwelisiwe apha ukunceda ii-I&AP ukuba ziqonde ngcono uphando ekufuneka lwenziwe njengxenxalenye yenkqubo yohlolo lokusingqongileyo.

Imiba yosiNgongqileyo enokuthi ibe khona yile:

- Ungcoliseko lomoya.
- Iimpembelelo zobuhle nezibonakalayo ezivela kwisitishi samandla ombane ngethuba lolwakhiwo nokusebenza kwaso.
- Iinzuzo zophuhliso kuqoqosho lwasekhaya nolwesithili.
- Iimpembelelo kwizilwanyana nakwizityalo zaloo ndawo.
- Iimpembelelo zokhuselo ezinokuba kho.
- Iimpembelelo zothutho ezinokuba kho ngethuba lokwakhiwa kwisitishi samandla ombane.
- Iimpembelelo ezinenkathazo ezinokuba kho ngethuba lokwakhiwa, umz,uthuli.
- Ulawulo longcoliseko nenkunkuma.
- Iimpembelelo zentlalo-ntle nezooqoqosho ngethuba lolwakhiwo eziphathelene nokuthontelana kwabasebenzi bolwakhiwo ngethuba lolwakhiwo olo (kwisithuba seminyaka engachazwanga) nangethuba lokusebenza kwaso.
- Inkxaso (okanye ukungabikho kwayo) yokunikezelwa kombane kuphuhliso oluzinzileyo.

Ngoobani ii-I&AP?

Nabani na okanye naliphi na iqela labantu elikhathalele, okanye elichatshazelwa ngumsebenzi neziphumo zawo. Oku kuquka abasemagunyeni, uluntu lwasekhaya, abatyali-zimali, abasebenzi, abathengi nabasebenzisi bemveliso, amaqela anomdla kokusingqongileyo kwanoluntu ngokubanzi.

UKUBHALISWA KWE-I&AP

Ngokwemithetho ye-EIA, le projekthi icetywayo idinga uhlolo kwanonxibelelwano lwemisebenzi kwiimpembelelo ezinokuba khona kokusingqongileyo zemisebenzi esikelezwe kwinkqubo echazwe kwiCandelo 27 ukuya ku-36 lesiGunyaziso R385 kaEpreli ka-2006. Ii-I&AP ziyacelwa ukuba zibhalise ukuqinisekisa ukuba zithunyelwe imbalelwano efanelekileyo zize zaziswe ngemihla ebalulekileyo yeentlanganisano nokuba amaxwebhu eprojekthi aza kufumaneka nini na ukuze zinike izimvo zazo.

INVITATION TO PARTICIPATE

The Environmental Assessment Process includes opportunities for you to be involved in the decision-making process. Your comments are important in identifying issues that will help focus the process and enhance decision-making. Your comments will be addressed and included in an Issues and Response Report, which will accompany the Scoping and Environmental Impact Reports. DEAT, as the decision-making authority, will review the reports to check that issues have been adequately addressed in the assessment process. Please make use of the following opportunities for participation:

- Examine and respond to information provided in this Background Information Document, at meetings, on the website (www.eskom.co.za/eia) and in the draft Scoping and Environmental Impact Reports.
- Register as an Interested and Affected Party in order to receive information and to record your comments.
- Complete the Comments Sheet and return by hand, mail, fax or email.
- Attend meetings and workshops to obtain further information, interact with the project team and raise issues and concerns. Details of meetings and workshops will be communicated at the appropriate time.
- Attend Focus Group Meetings held with various interested and affected parties to discuss the proposed projects. Details of meetings will be communicated at the appropriate time.
- Contact the Public Participation Office to obtain further project information and raise issues and concerns.

It is important that you take note of the deadlines for the submission of comments during the different phases of the environmental assessment process.

I&AP Comment

It is best to submit comment in writing via post, fax or email, either using the Comment Sheets provided or your own format. You may also provide verbal comment at meetings.

UITNODIGING TOT DEELNAME

Die Omgewingsimpakproses sluit geleentheid in waartydens u by die besluitnemingsproses betrokke kan raak. U kommentaar is belangrik in die identifisering van kwessies wat sal help om die proses te vereenvoudig en besluitneming verbeter. U kommentaar sal aangespreek word en sal in 'n Kwessies- en Terugvoerverslag saamgevat word wat die Omvangsbepaling- en Omgewingsimpak-verslag sal vergesel. DEAT, as die besluitnemingsowerheid sal die verslae hersien en kontroleer of alle kwessies gedurende die proses genoegsaam in ag geneem is. Maak asseblief gebruik van die volgende geleentheid tot deelname:

- Bestudeer en reageer op die inligting wat in hierdie Agtergrondsinligtingdokument vervat is, tydens vergaderings, op die webwerf (www.eskom.co.za/eia) en in die Konsep Omvangsbepaling- en Omgewingsimpak-verslag.
- Registreer as 'n Belanghebbende en Geaffekteerde Party ten einde inligting te ontvang en u kommentaar aan te teken.
- Voltooi die Kommentaarblad en stuur per hand, pos, faks of e-pos, terug.
- Woon vergaderings en werksinkels by ten einde verdere inligting te ontvang, met die projekspan te skakel en kwessies te opper. Inligting aangaande die vergaderings en werksinkels sal op die regte stadium aan u gekommunikeer word.
- Woon Fokus Groep Vergaderings by wat met verskeie rolspelers gehou sal word, waartydens die voornemende projek bespreek sal word. Inligting aangaande die vergaderings en werksinkels sal op die regte stadium aan u gekommunikeer word.
- Kontak die Publieke Deelname Kantoor ten einde verdere inligting aangaande die projek te verkry en kwessies te opper.

Dit is belangrik dat u kennis neem van die sluitingsdatums vir die inhandiging van kommentaar gedurende die verskillende fases van die omgewingsimpakproses.

B&GP Kommentaar

Dit is wenslik dat u geskrewe kommentaar per pos, faks of e-pos lewer. U kan van die Kommentaarblad of u eie formaat gebruik maak. U kan ook verbale kommentaar tydens vergadering lewer.

ISIMEMO SOKUTHABATHA INXAXHEBA

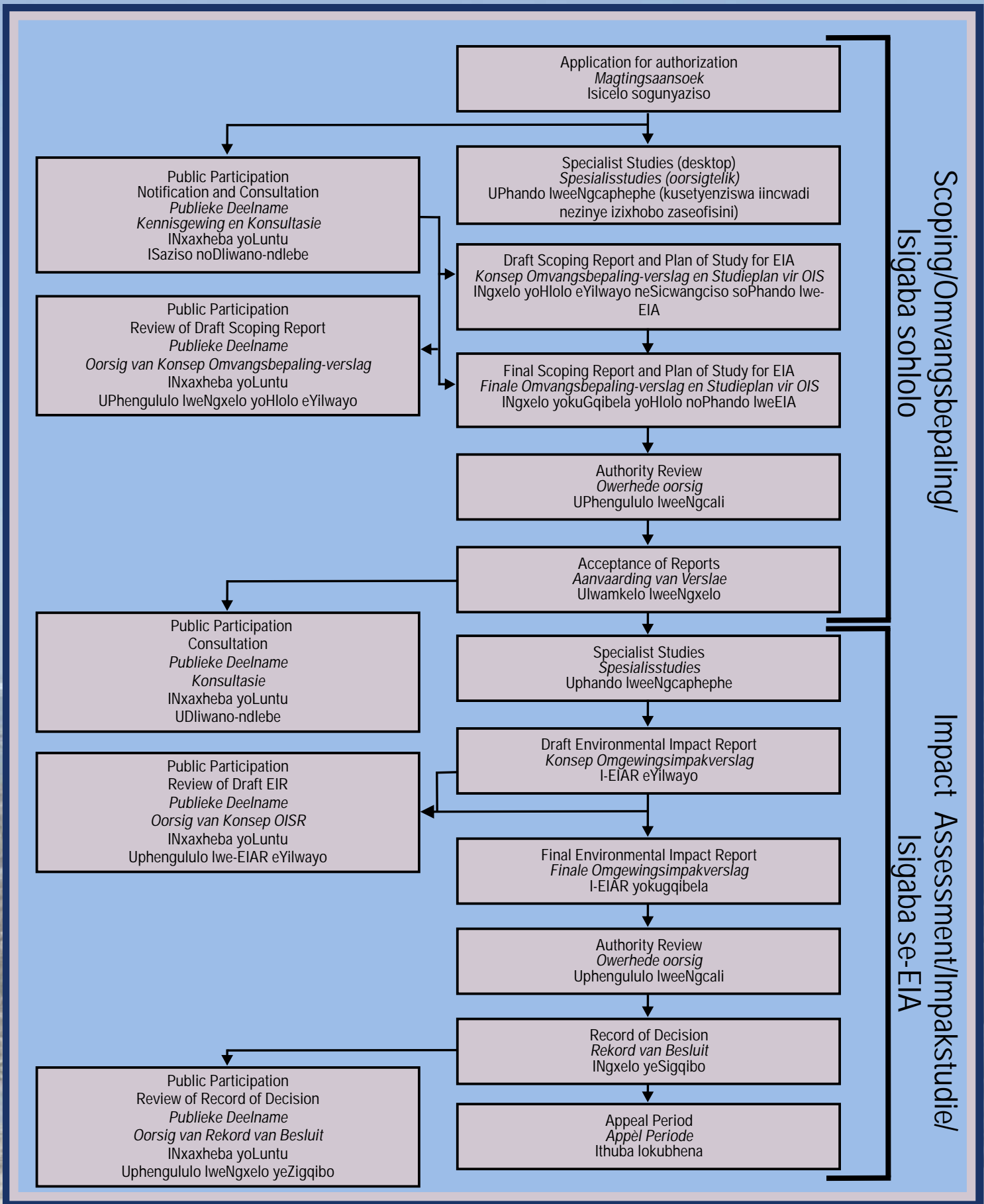
INkqubo yoHlolo lokusiNgqongileyo iquka amathuba akho okuba ubandakanyeke kwinkqubo yokuthabatha izigqibo. Izimvo zakho zibalulekile ekuchongeni imiba eza kuthi incede ekugqaliseni le nkqubo kwanokongeza ekuthatyathweni kwezigqibo. Izimvo zakho ziza kuthathelwa ingqalelo ze ziqukwe kwiNgxelo yeeMiba neMpendulo, eza kuthi ihambe neNgxelo zoHlolo neMpendulo zokusiNgqongileyo. I-DEAT, njengeziphatha-mandla ezithi zithabathe izigqibo, iza kuthi iqwalasele ngokutsha ezi ngxelo ukujonga ukuba imiba iqwalaselwe ngokufanelekileyo kwinkqubo yohlolo. Nceda usebenzise la mathuba alandelayo ukuthabatha inxaxheba:

- Vavanya uze uphendule kulwazi olunikezelwe kolu Xwebhu loLwazi ngeMvelaphi, ezintlanganisweni, kwi-website (www.eskom.co.za/eia) nakwiNgxelo zoyilo neMpendulo kokusiNgqongileyo.
- Bhalisa njengonMdla noChaphazekayo ukuze ufumane ulwazi, ushicilele izimvo zakho.
- Zalisa IPhepha leZimvo ze ulibuyisele ngesandla, ngeposi, ngefeksi okanye nge-imeyile.
- Yiya kwiintlanganiso neeseshoni zeengxoxo ukufumana ulwazi oluthe kratya, nxibelelana neqela leprojekthi uveze imiba nezinto ezikukhathazayo. linkcukacha ngeentlanganiso ziya kwaziswa ngethuba elifanelekileyo.
- Yiya kwiiNtlanganiso zamaQela aBandakanyekayo ezibanjwa kunye nabo banomdla kwabo bachaphazekayo ukuxoxa ngeprojekthi ezicetywayo. linkcukacha malunga neentlanganiso ziya kwaziswa ngexesha elifanelekileyo.
- Qhagamshelana neOfisi yeNtatho-nxaxheba yoLuntu ukufumana ulwazi oluthe kratya ngale projekthi nokuveza imiba kwanezinto ezikukhathazayo.

Kubalulekile ukuba uqaphele imihla yokuphelelwa kokungeniswa kwezimvo ngethuba lenkqubo yohlolo lokusingqongileyo.

Uluvo lwe-I&AP

Kokona kulungileyo ukungenisa uluvo olubhaliweyo ngeposi, ngefeksi okanye nge-imeyile, usebenzisa iphepha lezimvo olinikiweyo okanye olwakho uhlobo. Unakho nokunikezela izimvo zakho ngomlomo ezintlanganisweni.



Scoping/Omvangsbepaling/
Isigaba sohloho

Impact Assessment/Impakstudie/
Isigaba se-EIA

Diagram of the Environmental Assessment Process showing the Scoping and Impact Assessment Phases and their components (including public participation opportunities).

Diagram van die Omvangsbepaling- en Omgewingstudieproses en hul komponente (insluitend geleentheid tot publieke deelname)

Isazobe seNkqubo yoHlolo lokusiNgqongileyo ebonisa inqanaba lokujonga noHlolo lweMpembelelo kokusiNgqongileyo, kwakunye namacandelo azo (kuquka namathuba oluntu okuthabatha inxaxheba)



Koeberg Nuclear Power Station

Note: Although the plant type has not as yet been decided the above picture provides an indication of the infrastructure that could be associated with the proposed Nuclear Power Station

Koeberg Kernkragsentrale

Nota: Alhoewel die aanleg tipe nog nie bepaal is nie, verskaf die illustrasie 'n aanduiding van die infrastruktuur wat met die voorgestelde Kernkragsentrale gepaard kan gaan.

ISitishi saMandla eNyukliya saseKoeberg

Qaphela: Nangona kungekagqitywa ngohlobo lomzimveliso, lo mfanekiso ungentla unika umqondiso wesakhiwo esinokuhambisana neSitishi esicetywayo saMandla eNyukliya.

Public Participation Office Contact Details

Publieke Deelname Kantoor Kontakbesonderhede

Iinkcukacha Zeofisi Yothatho-nxaxheba Loluntu

ACER (Africa) - Environmental Management Consultants

Bongi Shinga / June Mottram

P O Box/Posbus 503, Mtunzini, 3867

Tel/Umnxeba: 086 010 4958 (cost of a local call/betaal slegs die koste van 'n plaaslike oproep/ngexabiso lomnxeba lalapha)

Fax/Faks/Ifeksi: 035 340 2232

E-mail/E-pos/I-imeyile: nuclear1@acerafrica.co.za

Website/Webwerf/Kwi-website: www.eskom.co.za/eia

Local Public Involvement Officer (based in Cape Town)/Plaaslike Publieke Deelname Beampte(in Kaapstad)/

IGosa lokuBandakanyeka koLuntu lwaseKhaya

Suzette Hattingh Tel/Umnxeba: 083 235 6799

E-mail/E-pos/I-imeyile: designop@designovative.com