

APPENDIX A1

Site plans

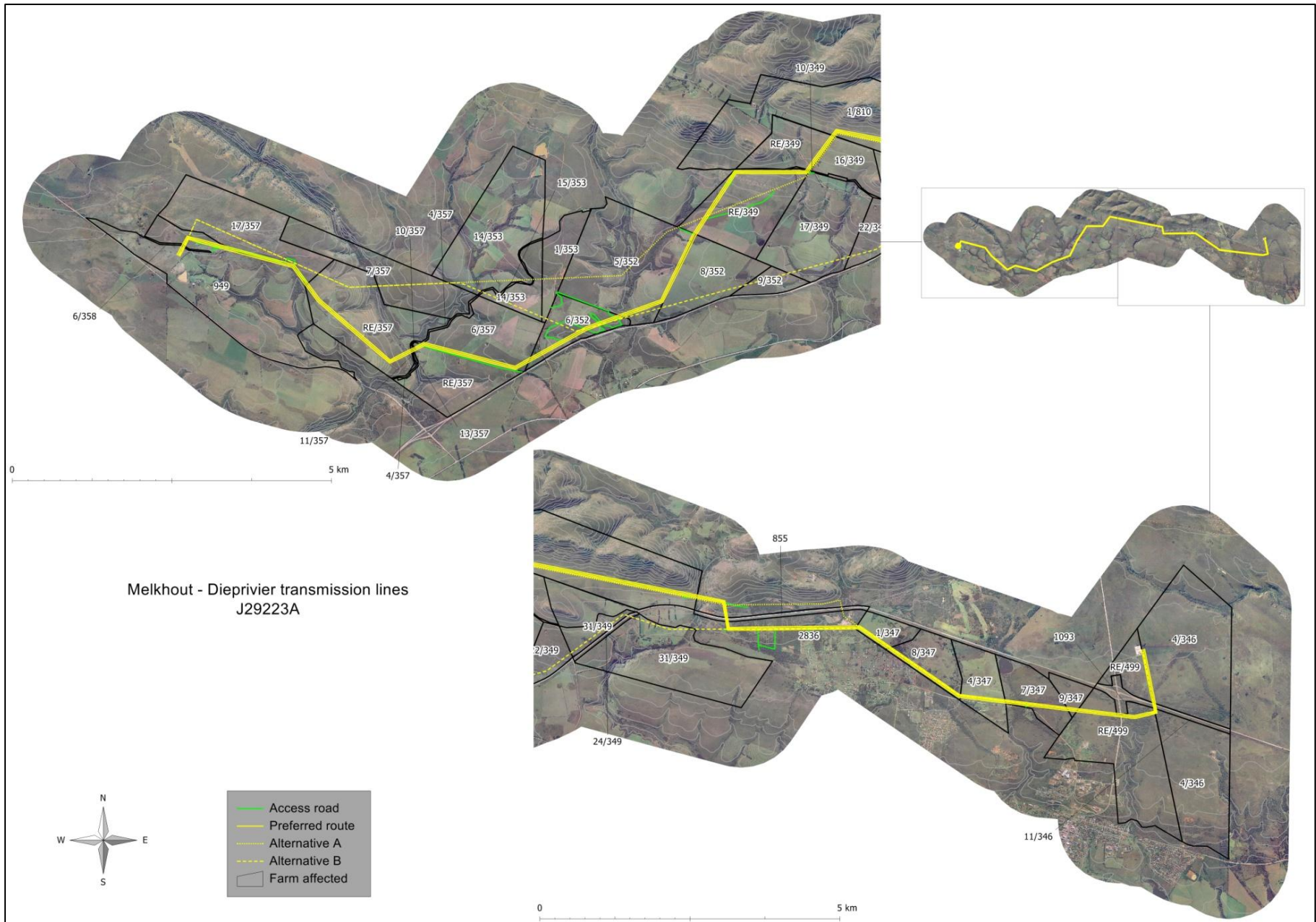


Figure 1: Map of affected erven.

APPENDIX A2

Layout/Route map

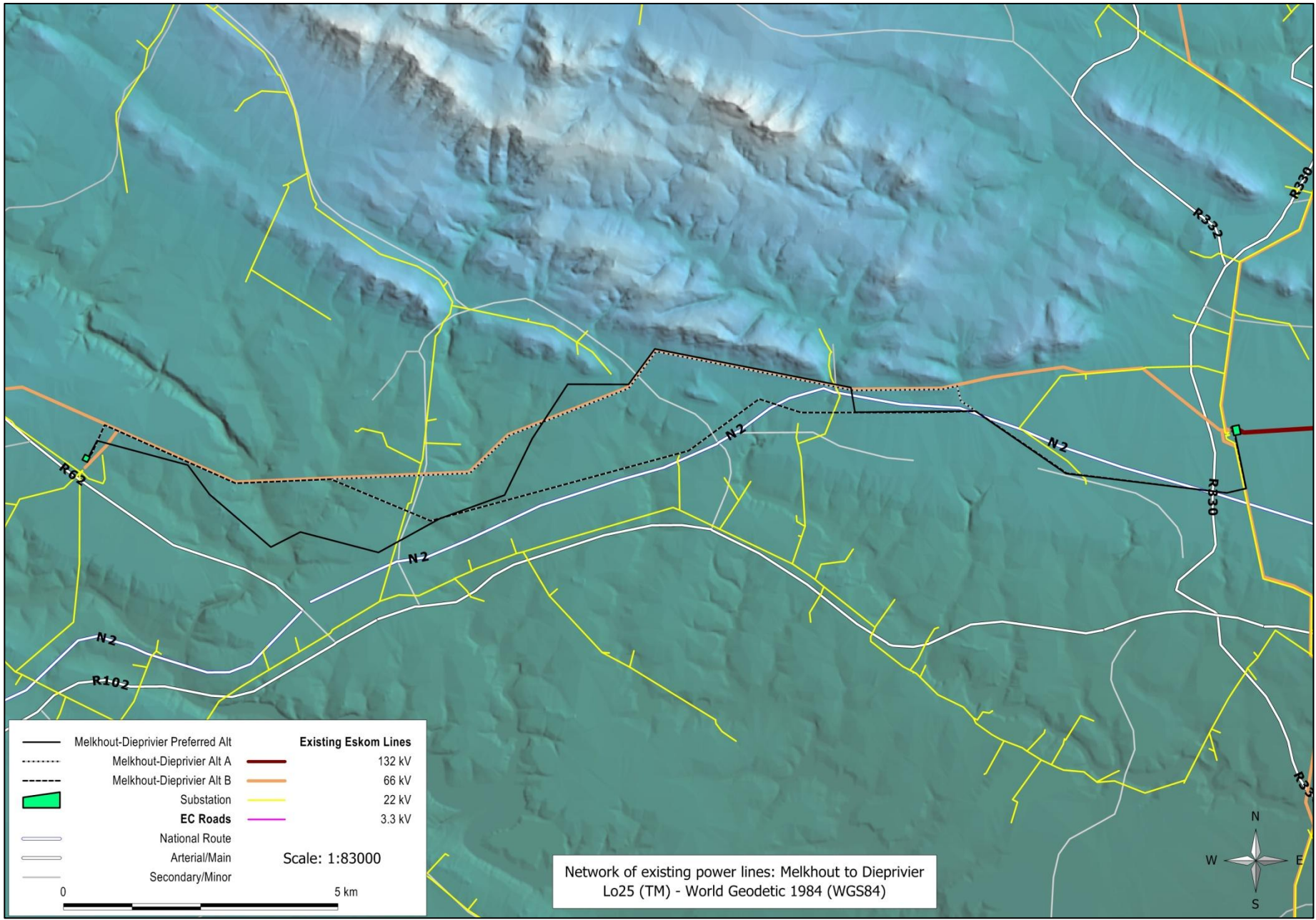


Figure 8: Existing Eskom infrastructure and route alignment.

APPENDIX A3

Sensitivity map

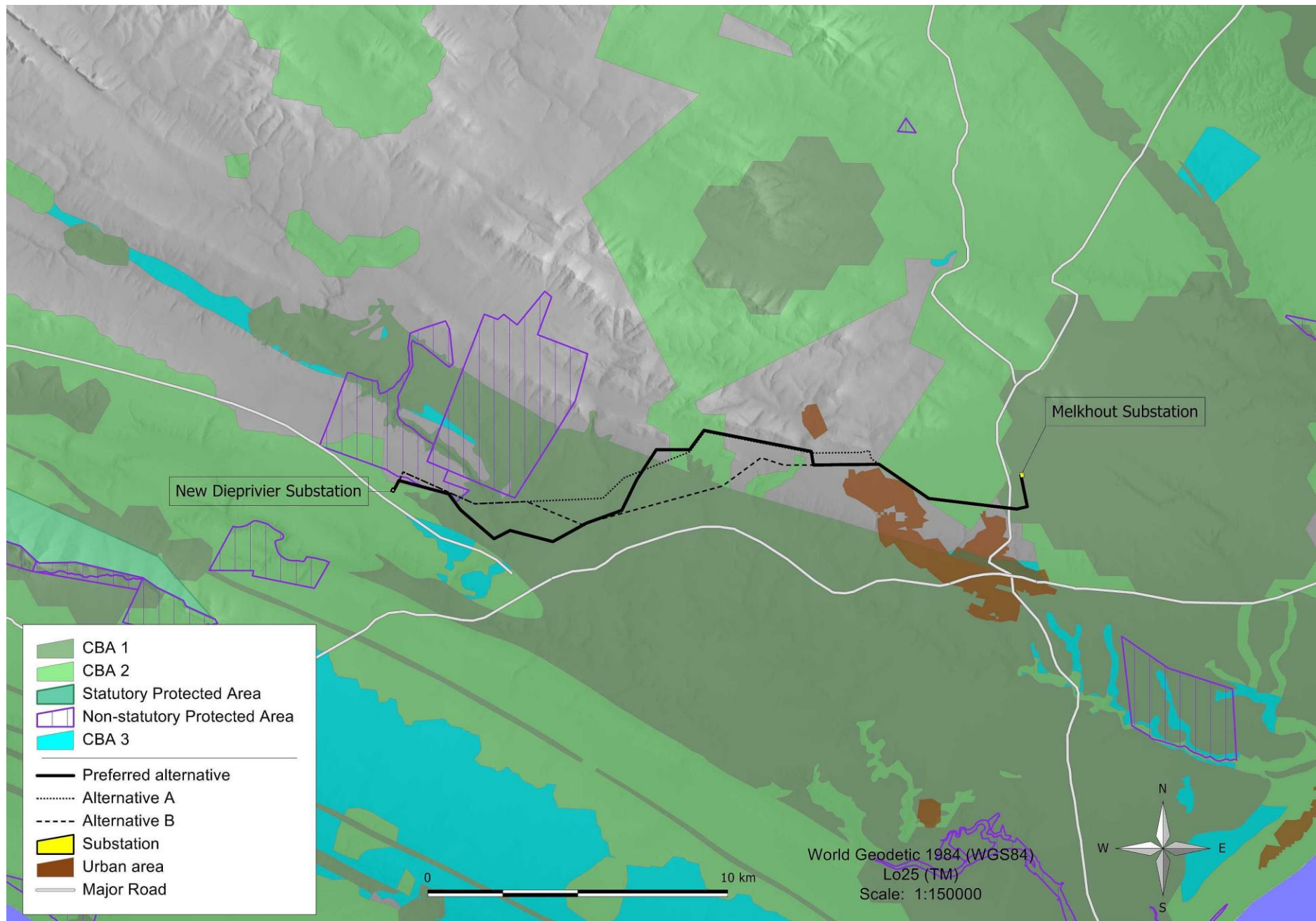


Figure 9: Sensitivity map for the Melkhout to Dieprivier distribution line.

APPENDIX A4

Route coordinates at 250 m intervals

Table 1. Route coordinates at 250 m intervals along the Preferred Alternative from Melkhout substation to the new Dieprivier substation

Point no	Longitude (D°DM')	Latitude (D°DM')	Point no	Longitude (D°DM')	Latitude (D°DM')
1	24°47.0724' E	34°00.0269' S	53	24°40.0903' E	33°59.3408' S
2	24°47.1045' E	34°00.1595' S	54	24°39.9932' E	33°59.4492' S
3	24°47.1365' E	34°00.2921' S	55	24°39.8919' E	33°59.5504' S
4	24°47.1685' E	34°00.4246' S	56	24°39.7295' E	33°59.5495' S
5	24°47.2005' E	34°00.5572' S	57	24°39.5672' E	33°59.5486' S
6	24°47.0929' E	34°00.6144' S	58	24°39.4048' E	33°59.5476' S
7	24°46.9338' E	34°00.6314' S	59	24°39.2425' E	33°59.5467' S
8	24°46.7726' E	34°00.6149' S	60	24°39.1265' E	33°59.6179' S
9	24°46.6114' E	34°00.5984' S	61	24°39.0373' E	33°59.7309' S
10	24°46.4503' E	34°00.5819' S	62	24°38.9482' E	33°59.8439' S
11	24°46.2891' E	34°00.5654' S	63	24°38.8590' E	33°59.9569' S
12	24°46.1279' E	34°00.5489' S	64	24°38.7698' E	34°00.0699' S
13	24°45.9668' E	34°00.5324' S	65	24°38.6961' E	34°00.1903' S
14	24°45.8056' E	34°00.5159' S	66	24°38.6243' E	34°00.3116' S
15	24°45.6444' E	34°00.4994' S	67	24°38.5525' E	34°00.4329' S
16	24°45.4833' E	34°00.4829' S	68	24°38.4806' E	34°00.5541' S
17	24°45.3221' E	34°00.4664' S	69	24°38.3835' E	34°00.6518' S
18	24°45.1609' E	34°00.4499' S	70	24°38.2307' E	34°00.6975' S
19	24°45.0131' E	34°00.4043' S	71	24°38.0779' E	34°00.7432' S
20	24°44.8795' E	34°00.3274' S	72	24°37.9250' E	34°00.7889' S
21	24°44.7460' E	34°00.2504' S	73	24°37.7722' E	34°00.8346' S
22	24°44.6124' E	34°00.1735' S	74	24°37.6223' E	34°00.8857' S
23	24°44.4789' E	34°00.0966' S	75	24°37.4798' E	34°00.9507' S
24	24°44.3453' E	34°00.0197' S	76	24°37.3374' E	34°01.0156' S
25	24°44.2118' E	33°59.9428' S	77	24°37.1949' E	34°01.0805' S
26	24°44.0782' E	33°59.8659' S	78	24°37.0524' E	34°01.1454' S
27	24°43.9323' E	33°59.8225' S	79	24°36.9074' E	34°01.1926' S
28	24°43.7699' E	33°59.8236' S	80	24°36.7505' E	34°01.1579' S
29	24°43.6076' E	33°59.8247' S	81	24°36.5935' E	34°01.1231' S
30	24°43.4452' E	33°59.8258' S	82	24°36.4366' E	34°01.0884' S
31	24°43.2829' E	33°59.8269' S	83	24°36.2796' E	34°01.0536' S
32	24°43.1205' E	33°59.8280' S	84	24°36.1227' E	34°01.0189' S
33	24°42.9582' E	33°59.8291' S	85	24°35.9693' E	34°01.0124' S
34	24°42.7958' E	33°59.8302' S	86	24°35.8243' E	34°01.0734' S
35	24°42.6335' E	33°59.8312' S	87	24°35.6794' E	34°01.1344' S
36	24°42.5639' E	33°59.7407' S	88	24°35.5540' E	34°01.0636' S
37	24°42.5377' E	33°59.6073' S	89	24°35.4313' E	34°00.9751' S
38	24°42.3982' E	33°59.5649' S	90	24°35.3085' E	34°00.8865' S
39	24°42.2390' E	33°59.5384' S	91	24°35.1858' E	34°00.7980' S
40	24°42.0798' E	33°59.5119' S	92	24°35.0631' E	34°00.7094' S
41	24°41.9206' E	33°59.4854' S	93	24°34.9403' E	34°00.6209' S
42	24°41.7614' E	33°59.4589' S	94	24°34.8437' E	34°00.5123' S
43	24°41.6022' E	33°59.4324' S	95	24°34.7476' E	34°00.4033' S
44	24°41.4430' E	33°59.4059' S	96	24°34.6321' E	34°00.3178' S
45	24°41.2838' E	33°59.3794' S	97	24°34.4754' E	34°00.2822' S
46	24°41.1246' E	33°59.3529' S	98	24°34.3188' E	34°00.2466' S
47	24°40.9655' E	33°59.3263' S	99	24°34.1621' E	34°00.2110' S
48	24°40.8063' E	33°59.2998' S	100	24°34.0055' E	34°00.1754' S
49	24°40.6471' E	33°59.2733' S	101	24°33.8489' E	34°00.1398' S
50	24°40.4879' E	33°59.2468' S	102	24°33.6922' E	34°00.1042' S
51	24°40.3287' E	33°59.2202' S	103	24°33.5739' E	34°00.1424' S
52	24°40.1874' E	33°59.2324' S			

Table 2. Route coordinates at 250 m intervals along Alternative A from Melkhout substation to the new Dieprivier substation.

Point no	Longitude (D°DM')	Latitude (D°DM')
1	24°47.0730' E	34°00.0537' S
2	24°47.1062' E	34°00.1861' S
3	24°47.1394' E	34°00.3185' S
4	24°47.1727' E	34°00.4508' S
5	24°47.2059' E	34°00.5832' S
6	24°47.0612' E	34°00.6204' S
7	24°46.9016' E	34°00.6280' S
8	24°46.7404' E	34°00.6111' S
9	24°46.5793' E	34°00.5943' S
10	24°46.4182' E	34°00.5775' S
11	24°46.2571' E	34°00.5606' S
12	24°46.0960' E	34°00.5438' S
13	24°45.9348' E	34°00.5269' S
14	24°45.7737' E	34°00.5101' S
15	24°45.6126' E	34°00.4932' S
16	24°45.4515' E	34°00.4764' S
17	24°45.2904' E	34°00.4595' S
18	24°45.1293' E	34°00.4427' S
19	24°44.9880' E	34°00.3824' S
20	24°44.8542' E	34°00.3058' S
21	24°44.7203' E	34°00.2293' S
22	24°44.5865' E	34°00.1527' S
23	24°44.4527' E	34°00.0761' S
24	24°44.3188' E	33°59.9995' S
25	24°44.1850' E	33°59.9230' S
26	24°44.0512' E	33°59.8464' S
27	24°43.9174' E	33°59.7698' S
28	24°43.8199' E	33°59.6722' S
29	24°43.7486' E	33°59.5838' S
30	24°43.5894' E	33°59.6088' S
31	24°43.4270' E	33°59.6101' S
32	24°43.2647' E	33°59.6113' S
33	24°43.1023' E	33°59.6125' S
34	24°42.9400' E	33°59.6137' S
35	24°42.7776' E	33°59.6149' S
36	24°42.6153' E	33°59.6161' S
37	24°42.4551' E	33°59.5985' S
38	24°42.2959' E	33°59.5719' S
39	24°42.1367' E	33°59.5453' S
40	24°41.9775' E	33°59.5187' S
41	24°41.8184' E	33°59.4921' S
42	24°41.6592' E	33°59.4655' S
43	24°41.5000' E	33°59.4389' S
44	24°41.3409' E	33°59.4123' S
45	24°41.1817' E	33°59.3857' S
46	24°41.0225' E	33°59.3591' S
47	24°40.8633' E	33°59.3325' S
48	24°40.7042' E	33°59.3059' S
49	24°40.5450' E	33°59.2793' S

Point no	Longitude (D°DM')	Latitude (D°DM')
50	24°40.3859' E	33°59.2526' S
51	24°40.2273' E	33°59.2273' S
52	24°40.1303' E	33°59.3357' S
53	24°40.0333' E	33°59.4442' S
54	24°39.9363' E	33°59.5526' S
55	24°39.8033' E	33°59.6218' S
56	24°39.6521' E	33°59.6710' S
57	24°39.5009' E	33°59.7203' S
58	24°39.3497' E	33°59.7695' S
59	24°39.1985' E	33°59.8188' S
60	24°39.0473' E	33°59.8680' S
61	24°38.8961' E	33°59.9173' S
62	24°38.7449' E	33°59.9665' S
63	24°38.5936' E	34°00.0157' S
64	24°38.4518' E	34°00.0772' S
65	24°38.3345' E	34°00.1707' S
66	24°38.2171' E	34°00.2641' S
67	24°38.0997' E	34°00.3576' S
68	24°37.9678' E	34°00.4225' S
69	24°37.8056' E	34°00.4278' S
70	24°37.6433' E	34°00.4331' S
71	24°37.4811' E	34°00.4384' S
72	24°37.3188' E	34°00.4437' S
73	24°37.1566' E	34°00.4490' S
74	24°36.9943' E	34°00.4543' S
75	24°36.8321' E	34°00.4596' S
76	24°36.6698' E	34°00.4649' S
77	24°36.5075' E	34°00.4702' S
78	24°36.3453' E	34°00.4755' S
79	24°36.1830' E	34°00.4808' S
80	24°36.0208' E	34°00.4861' S
81	24°35.8585' E	34°00.4913' S
82	24°35.6963' E	34°00.4966' S
83	24°35.5340' E	34°00.5019' S
84	24°35.3718' E	34°00.5071' S
85	24°35.2129' E	34°00.4979' S
86	24°35.0648' E	34°00.4425' S
87	24°34.9167' E	34°00.3870' S
88	24°34.7686' E	34°00.3316' S
89	24°34.6205' E	34°00.2761' S
90	24°34.4724' E	34°00.2206' S
91	24°34.3244' E	34°00.1652' S
92	24°34.1763' E	34°00.1097' S
93	24°34.0282' E	34°00.0542' S
94	24°33.8801' E	33°59.9988' S
95	24°33.7321' E	33°59.9433' S
96	24°33.6477' E	34°00.0277' S
97	24°33.5811' E	34°00.1510' S

Table 3. Route coordinates at 250 m intervals along the Alternative B from Melkhout substation to the new Dieprivier substation.

Point no	Longitude (D°DM')	Latitude (D°DM')	Point no	Longitude (D°DM')	Latitude (D°DM')
1	24°47.0730' E	34°00.0537' S	49	24°40.5523' E	34°00.2196' S
2	24°47.1062' E	34°00.1861' S	50	24°40.3955' E	34°00.2547' S
3	24°47.1394' E	34°00.3185' S	51	24°40.2387' E	34°00.2898' S
4	24°47.1727' E	34°00.4508' S	52	24°40.0819' E	34°00.3248' S
5	24°47.2059' E	34°00.5832' S	53	24°39.9250' E	34°00.3599' S
6	24°47.0612' E	34°00.6204' S	54	24°39.7682' E	34°00.3949' S
7	24°46.9016' E	34°00.6280' S	55	24°39.6114' E	34°00.4300' S
8	24°46.7404' E	34°00.6111' S	56	24°39.4546' E	34°00.4650' S
9	24°46.5793' E	34°00.5943' S	57	24°39.2977' E	34°00.5001' S
10	24°46.4182' E	34°00.5775' S	58	24°39.1409' E	34°00.5351' S
11	24°46.2571' E	34°00.5606' S	59	24°38.9841' E	34°00.5701' S
12	24°46.0960' E	34°00.5438' S	60	24°38.8272' E	34°00.6052' S
13	24°45.9348' E	34°00.5269' S	61	24°38.6704' E	34°00.6402' S
14	24°45.7737' E	34°00.5101' S	62	24°38.5135' E	34°00.6752' S
15	24°45.6126' E	34°00.4932' S	63	24°38.3567' E	34°00.7102' S
16	24°45.4515' E	34°00.4764' S	64	24°38.1998' E	34°00.7453' S
17	24°45.2904' E	34°00.4595' S	65	24°38.0430' E	34°00.7803' S
18	24°45.1293' E	34°00.4427' S	66	24°37.8862' E	34°00.8153' S
19	24°44.9880' E	34°00.3824' S	67	24°37.7293' E	34°00.8503' S
20	24°44.8542' E	34°00.3058' S	68	24°37.5724' E	34°00.8853' S
21	24°44.7203' E	34°00.2293' S	69	24°37.4220' E	34°00.8423' S
22	24°44.5865' E	34°00.1527' S	70	24°37.2724' E	34°00.7897' S
23	24°44.4527' E	34°00.0761' S	71	24°37.1228' E	34°00.7372' S
24	24°44.3188' E	33°59.9995' S	72	24°36.9732' E	34°00.6846' S
25	24°44.1850' E	33°59.9230' S	73	24°36.8236' E	34°00.6320' S
26	24°44.0512' E	33°59.8464' S	74	24°36.6740' E	34°00.5795' S
27	24°43.8970' E	33°59.8266' S	75	24°36.5244' E	34°00.5269' S
28	24°43.7346' E	33°59.8294' S	76	24°36.3747' E	34°00.4745' S
29	24°43.5723' E	33°59.8321' S	77	24°36.2125' E	34°00.4798' S
30	24°43.4100' E	33°59.8348' S	78	24°36.0502' E	34°00.4851' S
31	24°43.2476' E	33°59.8347' S	79	24°35.8880' E	34°00.4904' S
32	24°43.0853' E	33°59.8346' S	80	24°35.7257' E	34°00.4957' S
33	24°42.9229' E	33°59.8344' S	81	24°35.5635' E	34°00.5009' S
34	24°42.7606' E	33°59.8343' S	82	24°35.4012' E	34°00.5062' S
35	24°42.5982' E	33°59.8342' S	83	24°35.2398' E	34°00.5080' S
36	24°42.4358' E	33°59.8340' S	84	24°35.0917' E	34°00.4525' S
37	24°42.2735' E	33°59.8339' S	85	24°34.9436' E	34°00.3971' S
38	24°42.1111' E	33°59.8337' S	86	24°34.7955' E	34°00.3416' S
39	24°41.9488' E	33°59.8335' S	87	24°34.6474' E	34°00.2862' S
40	24°41.7942' E	33°59.7926' S	88	24°34.4993' E	34°00.2307' S
41	24°41.6399' E	33°59.7507' S	89	24°34.3512' E	34°00.1752' S
42	24°41.4855' E	33°59.7087' S	90	24°34.2031' E	34°00.1198' S
43	24°41.3486' E	33°59.7579' S	91	24°34.0551' E	34°00.0643' S
44	24°41.2175' E	33°59.8377' S	92	24°33.9070' E	34°00.0088' S
45	24°41.0865' E	33°59.9175' S	93	24°33.7589' E	33°59.9533' S
46	24°40.9554' E	33°59.9973' S	94	24°33.6598' E	34°00.0053' S
47	24°40.8243' E	34°00.0770' S	95	24°33.5932' E	34°00.1286' S
48	24°40.6932' E	34°00.1568' S	96	24°33.5263' E	34°00.2317' S

APPENDIX A5

Land owner details

Table 4: Affected landowner details

Land owner	Contact person	Farm/Erf no	Ptn
Happy Valley Trust	Albert Strydom	810	1
Waterwheel Inv 114 Pty Ltd	Anton Le Roux	349	0
Waterwheel Inv 114 Pty Ltd	Anton Le Roux	349	16
Waterwheel Inv 114 Pty Ltd	Anton Le Roux	349	17
Kouga Municipality	Aubrey Marais	346	4
MUN Humansdorp	Aubrey Marais	347	1
MUN Humansdorp	Aubrey Marais	347	4
MUN Humansdorp	Aubrey Marais	347	7
MUN Humansdorp	Aubrey Marais	347	8
Poza Real Estate Pty Ltd	Douglas Shone	357	17
Transnet Ltd	Gilbert Nortier	349	10
Transnet Ltd	Gilbert Nortier	357	4
Transnet Ltd	Gilbert Nortier	357	13
Transnet Ltd	Gilbert Nortier	358	6
Transnet Ltd	Gilbert Nortier	353	15
Zietsman Johan Pienaar	Johan Pienaar	357	0
Rhebuck Trust	John Peacock	352	5
John Strydom Familie Trust	John Strydom	353	1
John Strydom Familie Trust	John Strydom	357	7
John Strydom Familie Trust	John Strydom	353	14
John Strydom Familie Trust	John Strydom	357	6
Doringrug Development Trust	Migo Meyer	349	31
South African National Roads Agency	Nana Gouws	346	11
South African National Roads Agency	Nana Gouws	1093	
South African National Roads Agency	Nana Gouws	349	24
Nap Heynes Familie Trust	Nap Heynes	352	9
Nap Heynes Familie Trust	Nap Heynes	352	8
Nic Heynes Familie Trust	Nic Heynes	352	6
Ferreira Paul Buchner	Paul Ferreira	357	10
Fisantrand Boerdery Pty Ltd	Siegfried Naude	349	22
Heever Charl Marais Van Den	Charl v d Heever	347	9
Zietsman Johan Pienaar	Johan Pienaar	357	11
Hennie Anderson Familie Trust	Hennie Anderson	499	0
Clive Bramwell	Clive Bramwell	949	