

Appendix B: Site photographs

The affected site spans approximately 6 ha and is almost entirely surrounded by the Umgeni Business Park, apart from the area east of Connaught Bridge, which borders Umgeni Park (Riverside) residential area. The proposed development will thus take place in an environment that has been heavily modified and influenced by human activities.

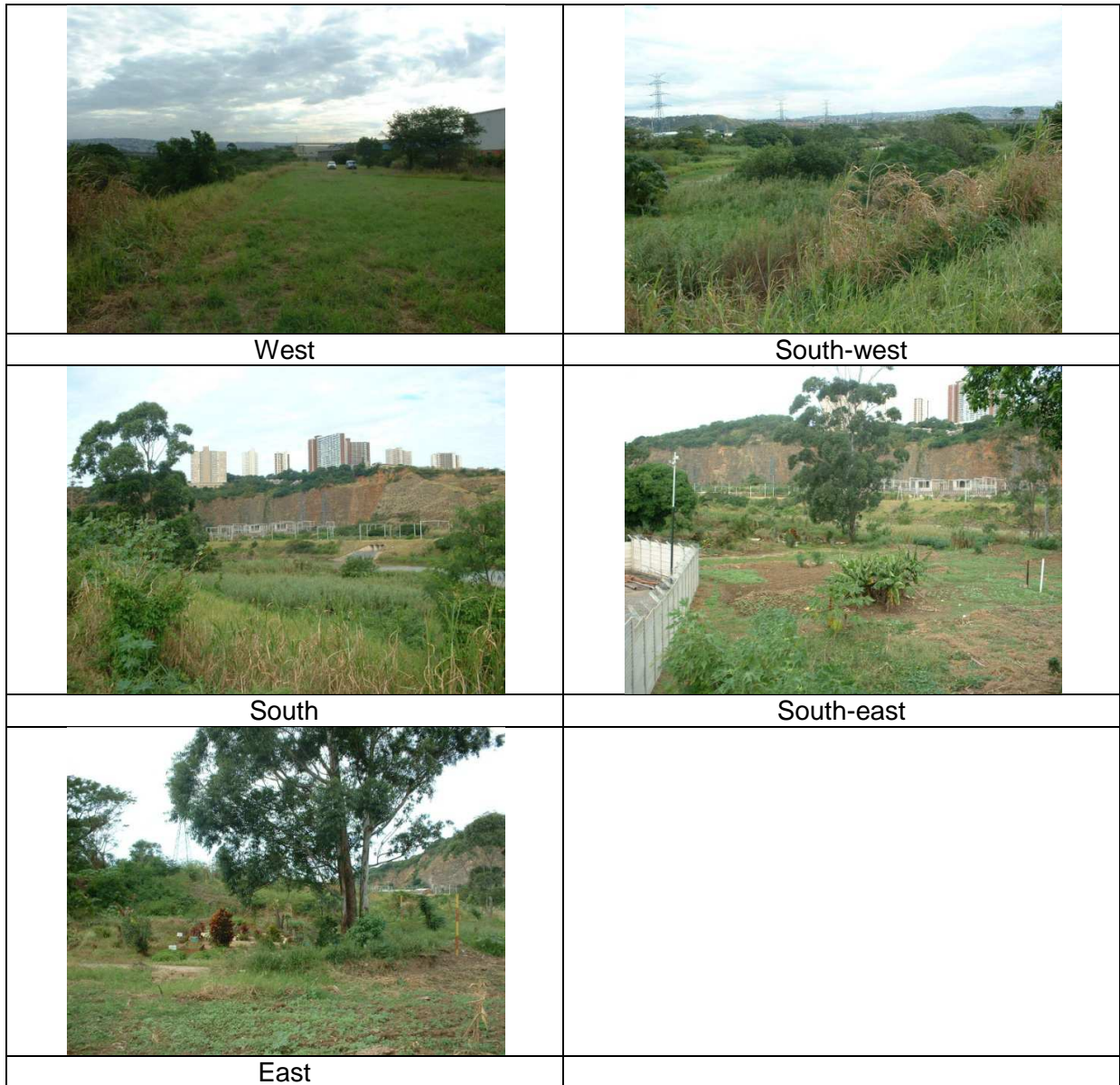


Figure 1. Photographs taken in five cardinal point directions.

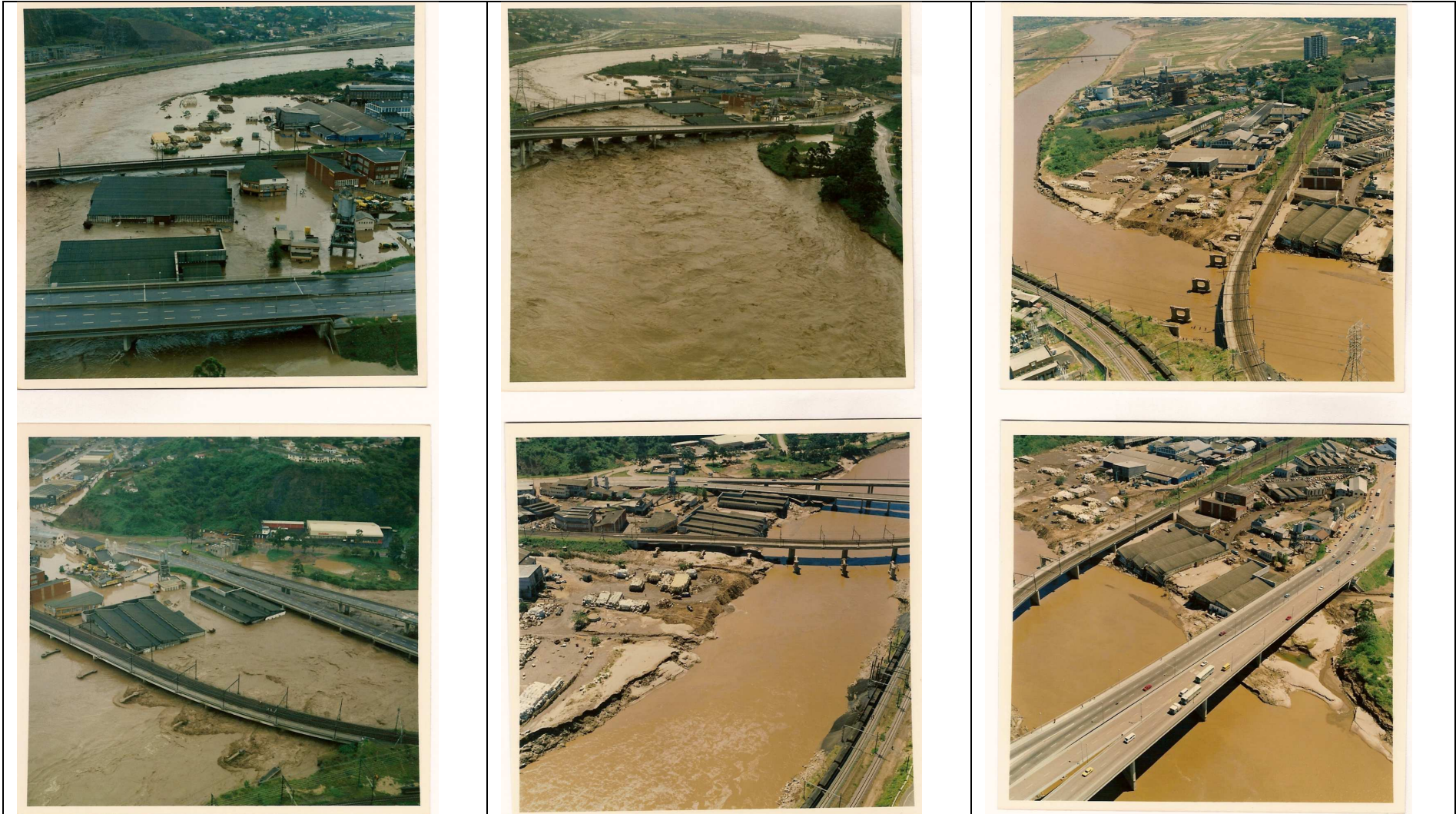


Figure 2. Aerial photographs of the flood of 1987, which was estimated to be between 65 and 130 year storm event, and affected a large portion of the Umgeni River floodplain in which the Umgeni Business Park was established.